



**Grüne  
Woche**

The global hub for agribusiness

# Advertising Portfolio for Exhibitors, Sponsors and Partners

January 17 - 26, 2025

**Grüne Woche**

Berlin Exhibition Grounds

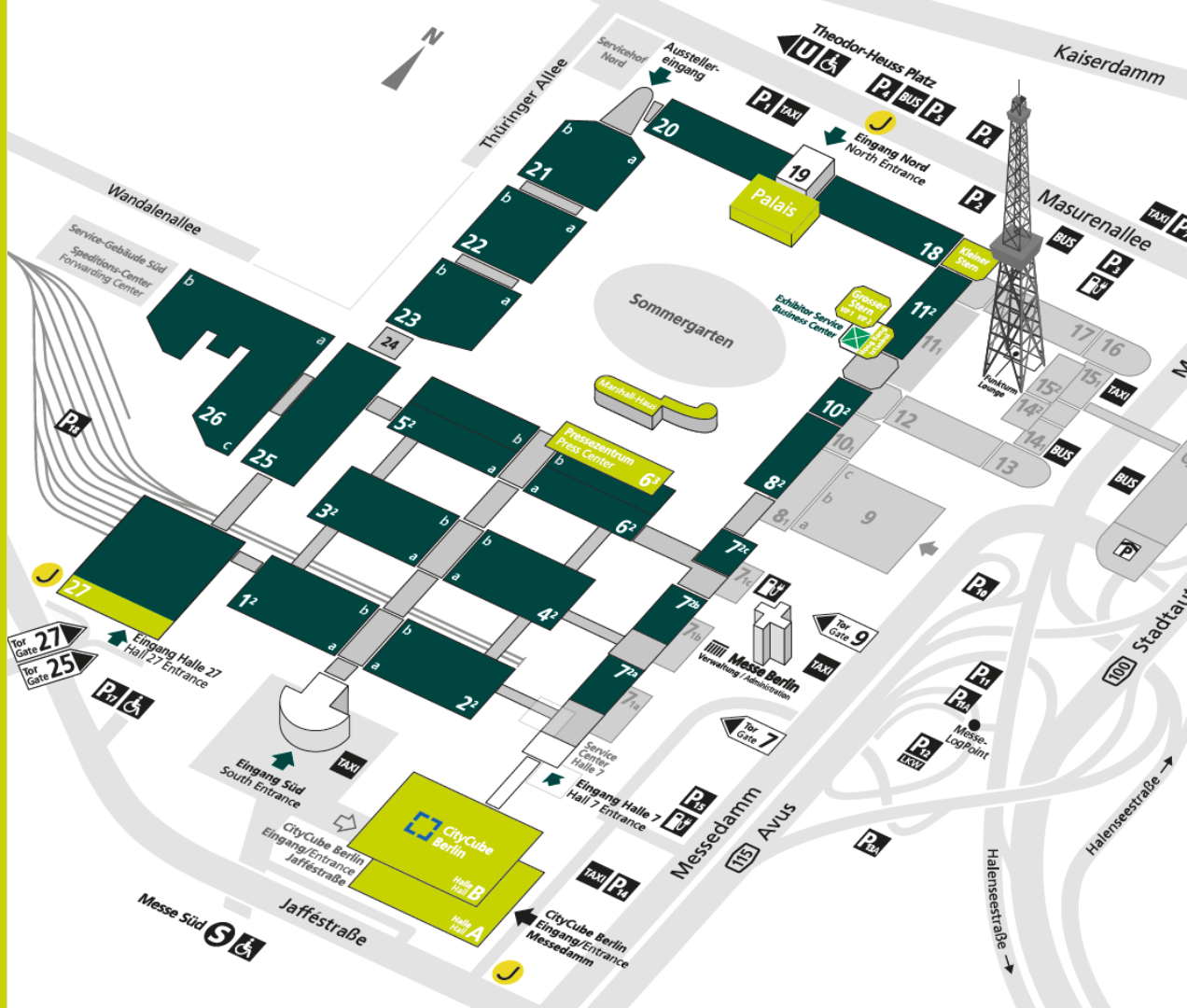
[www.gruenewoche.com](http://www.gruenewoche.com)

[#GW2025](https://twitter.com/GW2025) [#gruenewoche](https://www.instagram.com/gruenewoche)



# BERLIN EXPOCENTER CITY

SITE MAP of GRÜNE WOCHE



# TABLE OF CONTENTS

## ADVERTISING OPPORTUNITIES/ LOCATIONS

<u>ADVERTISING PACKAGES</u>	<b><u>4</u></b>
<u>PROMOTION</u>	<b><u>6</u></b>
<u>ON-SITE ADVERTISING ENTRANCE NORTH</u>	<b><u>8</u></b>
<u>ON-SITE ADVERTISING ENTRANCE SOUTH SURROUNDINGS</u>	<b><u>18</u></b>
<u>ON-SITE ADVERTISING ENTRANCE SOUTH</u>	<b><u>23</u></b>
<u>ON-SITE ADVERTISING MESSEDAMM HIGH TRAFFIC AREA</u>	<b><u>35</u></b>
<u>ON-SITE ADVERTISING HALL 27</u>	<b><u>40</u></b>
<u>HALL SPECIFIC ADVERTISING</u>	<b><u>51</u></b>
<u>ADVERTISING SPECIALS</u>	<b><u>80</u></b>
<u>SANITARY FACILITIES ADVERTISING</u>	<b><u>85</u></b>

# ADVERTISING PACKAGES



## LOGO COMBI

295 EUR

BEST SELLER

### Onsite:

- **1x standlogo on the exhibition grounds:** logo integration in the hall overview of the hall

### Online:

- **1x Top-Logo website:** Logo above your own hall on the interactive hall plans



## LIGHT COMBI

495 EUR

### Onsite:

- **1x floor graphic on the exhibition grounds:** Floor graphic (1m x 1m) in the area around your hall

### Online:

- **1x Sandwich-Banner app**
- **1x Sandwich-Banner website**



## SHINE COMBI

1,395 EUR

### Onsite:

- **1x digital screen on the exhibition grounds:** Advertising on an UltraStretched screen in the signage system without audio in the middle foyers of Halls 1.2 to 6.2\*

### Online:

- **1x Sandwich-Banner app**
- **1x Sandwich-Banner website**
- **1x App-Story**

\* The position depends on availability. The content can consist of images or videos and is shown exclusively.



## STAR COMBI

2,595 EUR

### Onsite:

- **1x mobile digital stele on the exhibition grounds:** Advertising on a digital display, 1-sided without audio, at a highly frequented location\*

### Online:

- **1x Top-Listing app**
- **1x Top-Listing website**
- **1x Top-Banner app**
- **1x Top-Banner in the hall plan website**

\* The position depends on availability. The content can consist of images or videos and is shown exclusively.

# PROMOTION



# PROMOTION



## Assignment of Promoters

**Description** A promotion team appointed by the exhibitor distributes fancy give-aways and informative advertising material during the show on the exhibition site. This opportunity enhances the exhibitor's presence and guides visitors to his stand.

**Promotion License** 1,480.00 EUR promotion license per person, Personnel and storage costs as well as advertising material etc. are not included

**Status** Availability upon request.

**Important Note** Promotional activities directly in the halls or next to stands of other exhibitors are not allowed.

# PROMOTION



## Promotion Spaces for Mobile Exhibits like Cars/ Trucks

**Description** A promotional vehicle branded with advertising (no digital advertising) supplied by the exhibitor is placed at a highly frequented location as for example at the access to Entrance South. A detailed overview of all positions will be gladly provided anytime.

**Hire Charge** From 3,200.00 EUR per position

**Status** **Availability upon request.**

## Promotion Spaces for Inflatables

**Description** An eye-catching advertising inflatable or mobile exhibit supplied by the exhibitor is placed at a highly frequented location as for example on the plaza of Entrance South. A detailed overview of all positions will be gladly provided anytime.

**Hire Charge** From 4,075.00 EUR per position

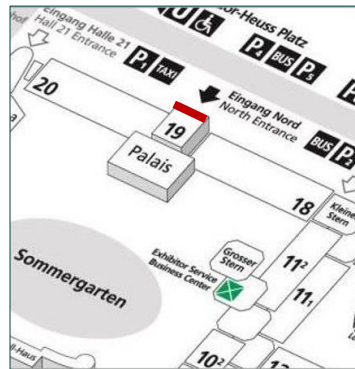
**Status** **Availability upon request.**

# ON-SITE ADVERTISING ENTRANCE NORTH



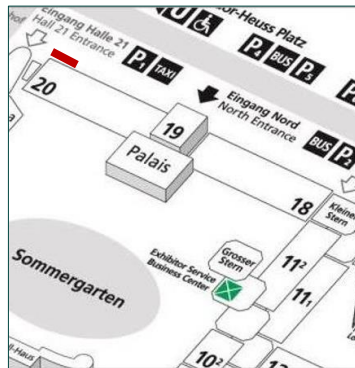


# ENTRANCE NORTH - OUTDOORS



## 2 Entrance Signs in front of Hall 19

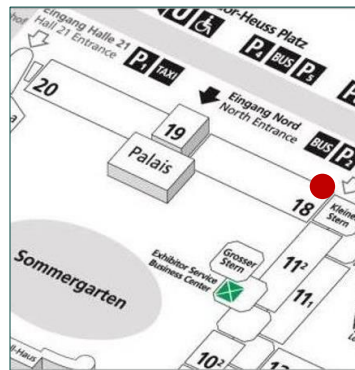
- Location** Entrance North: Co-branding with Grüne Woche and exhibitor advertising (see red mark on the photo)
- Size (w x h)** 2 signs 12.00 m x 2.50 m each for the exhibitor's logo/ claim
- Hire Charge** 9,915.00 EUR for both signs
- Production/ Installation** 3,190.00 EUR for both signs
- Status** **Availability upon request.**



## 1 Mega-Banner at Hall 20

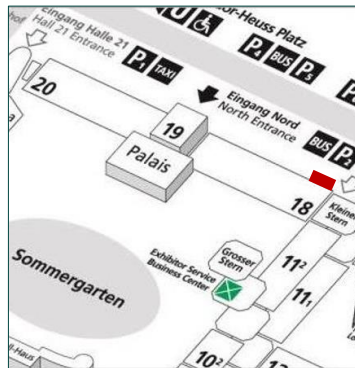
- Location** at the facade of Hall 20 (see red mark on the photo)
- Size (w x h)** 8.58 m x 11.20 m
- Hire Charge** 11,690.00 EUR
- Production/ Installation** 4,410.00 EUR
- Status** **Availability upon request.**

# ENTRANCE NORTH - OUTDOORS



## 1 Advertising Tower in front of Hall 18, 2-sided

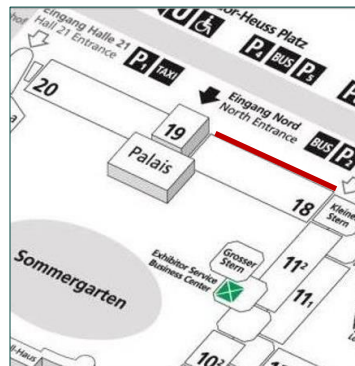
<b>Location</b>	in front of Hall 18 at Entrance North
<b>Size (w x h)</b>	3,70 m x 5,75 m per side (2 sides in total)
<b>Hire Charge</b>	4,685.00 EUR for both sides
<b>Production/ Installation</b>	2,200.00 EUR for both sides
<b>Status</b>	<b>Availability upon request.</b>



## 1 Mega-Banner at Hall 18

<b>Location</b>	at the facade of Hall 18 (see red mark on the photo)
<b>Size (w x h)</b>	8,58 m x 11,20 m
<b>Hire Charge</b>	11,690.00 EUR
<b>Production/ Installation</b>	4,410.00 EUR
<b>Status</b>	<b>Availability upon request.</b>

# ENTRANCE NORTH - OUTDOORS



## 1 Gallery Banner in front of Hall 18

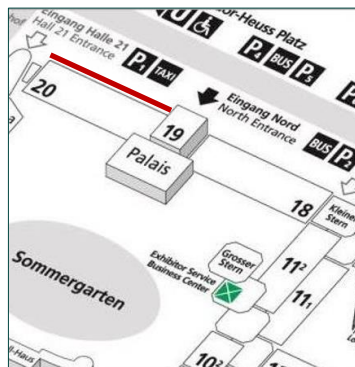
**Location** at the balustrade in front of Hall 18

**Size (w x h)** max. 88.77 m x 1.50 m for 3 branding areas:  
 Branding area 1: 6.41 m x 1.50 m  
 Branding area 2: 78,13 m x 1.50 m  
 Branding area 3: 4,50 m x 1.50 m  
 Smaller Formats on demand.

**Hire Charge** 13,340.00 EUR for all 3 branding areas

**Production/ Installation** 19,630.00 EUR for all 3 branding areas

**Status** **Availability upon request.**



## 1 Gallery Banner in front of Hall 20

**Location** at the balustrade in front of Hall 20

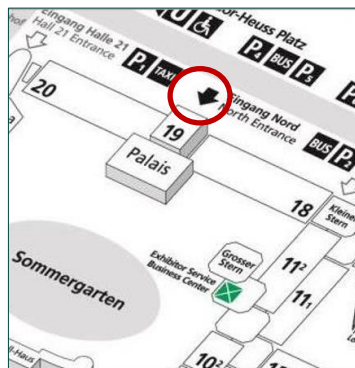
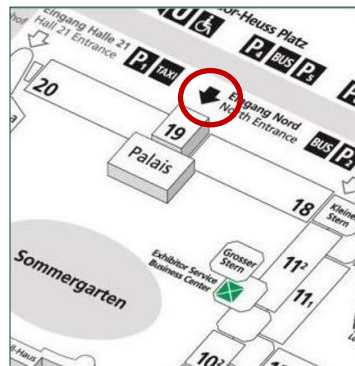
**Size (w x h)** max. 100.997 m x 1.50 m for 3 branding areas:  
 Branding area 1: 11.206 m x 1.50 m  
 Branding area 2: 83.441 m x 1.50 m  
 Branding area 3: 6.35 m x 1.50 m  
 Smaller Formats on demand.

**Hire Charge** 15,460.00 EUR for all 3 branding areas

**Production/ Installation** 19,140.00 EUR for all 3 branding areas

**Status** **Availability upon request.**

# ENTRANCE NORTH - OUTDOORS



## Up to 14 Poster Showcases at Access

**Location** up to 14 showcases. The exact positions depend on the final allocation of this area.  
7 showcases in front of Entrance North on the left  
7 showcases in front of Entrance North on the right

**Size (w x h)** 1.15 m x 1.71 m per poster  
(2 posters per showcase)

**Hire Charge** e.g. 8,755.00 EUR for 7 showcases

**Production/ Installation** e.g. 16,030.00 EUR For 7 showcases

**Status** **Availability upon request.**

## 2 Bench Displays, each 2-sided

**Location** at the access to Entrance North: on the left and on the right side

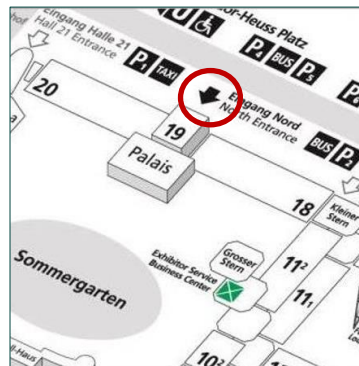
**Size (w x h)** 2.05 m x 2.05 m per side  
(2 sides per display)

**Hire Charge** 4,275.00 EUR for both displays

**Production/ Installation** 810.00 EUR for both displays

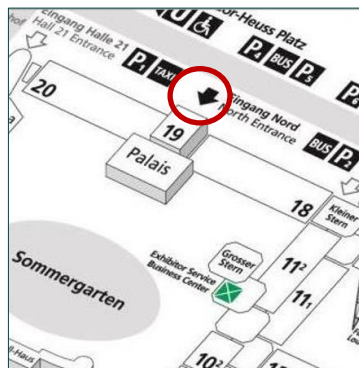
**Status** **Availability upon request.**

# ENTRANCE NORTH - OUTDOORS



## Mobile Exhibits like Promotional Cars

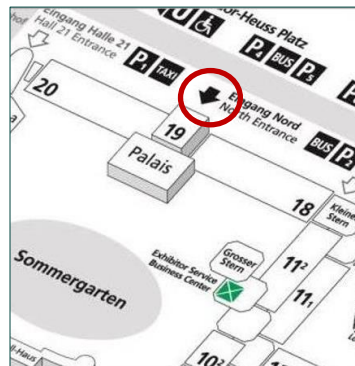
- Location** A promotional car branded with advertising supplied by the exhibitor is placed at a highly frequented location at the access to Entrance North: exact position by arrangement
- Size (w x h)** approx. 3.00 m x 3.00 m per position
- Hire Charge** from 3,200.00 EUR per position
- Status** **Availability upon request.**



## Up to 2 Mobile Advertising Towers, each 4-sided

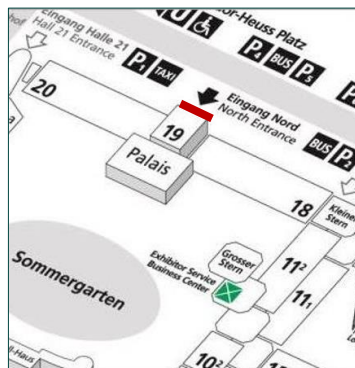
- Location** at the access to Entrance North: positions by arrangement
- Size (w x h)** 2.302 m x 4.15 m per side (4 sides per tower)
- Hire Charge** 5,490.00 EUR per 4-sided tower
- Production/ Installation** 2,970.00 EUR per 4-sided tower
- Status** **Availability upon request.**

# ENTRANCE NORTH - OUTDOORS



## Up to 5 Poster Showcases in front of Hall 19, each 2-sided

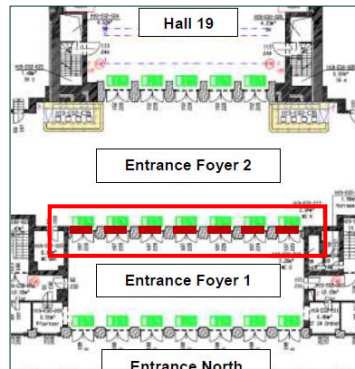
<b>Location</b>	in front of Hall 19 at Entrance North
<b>Size (w x h)</b>	1.15 m x 1.71 m per poster (2 posters per showcase)
<b>Hire Charge</b>	6,250.00 EUR for 5 showcases
<b>Production/Installation</b>	11,450.00 EUR for 5 showcases
<b>Status</b>	<b>Availability upon request.</b>



## Up to 16 Columns Brandings

<b>Location</b>	directly at Entrance North in front of the entrance doors to Hall 19
<b>Size (w x h)</b>	visible size: 0.70 m x 4.00 m x 1.00 m (w x h x d) production size: 0.76 m x 4.02 m x 1.06 m (w x h x d)
<b>Hire Charge</b>	e.g. 9,740.00 EUR for 16 column brandings
<b>Production/Installation</b>	e.g. 37,075.00 EUR for 16 column brandings
<b>Status</b>	<b>Availability upon request.</b>

# ENTRANCE NORTH - INDOORS



## Up to 7 Banner in the Entrance Foyer 1

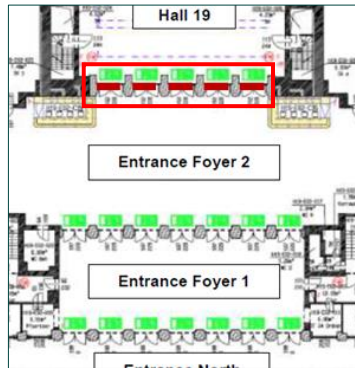
**Location** above the entrance doors to the Entrance Foyer 2 (see red marks on the map)

**Size (w x h)** 2.20 m x 3.40 m per banner

**Hire Charge** 1,535.00 EUR per banner

**Production/ Installation** 775.00 EUR per banner

**Status** **Availability upon request.**



## Up to 5 Banner in the Entrance Foyer 2

**Location** in the Entrance Foyer 2 above the entrance doors to Hall 19 (see red marks on the map)

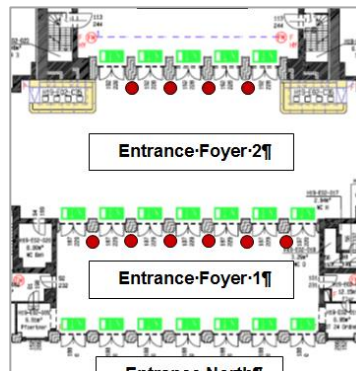
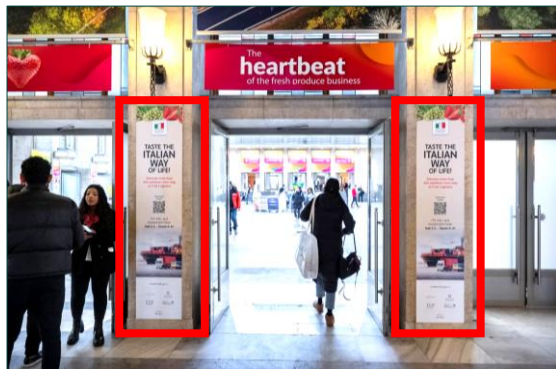
**Size (w x h)** 2.20 m x 2.90 m per banner

**Hire Charge** 1,310.00 EUR per banner

**Production/ Installation** 675.00 EUR per banner

**Status** **Availability upon request.**

# ENTRANCE NORTH - INDOORS



## Up to 10 Column Brandings in the Entrance Foyers

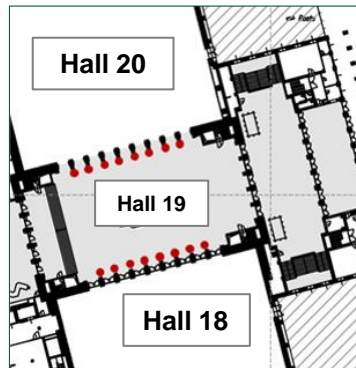
**Location** 6 columns in the Entrance Foyer 1 and 4 columns in the Entrance Foyer 2 (see red points on the map)

**Size (w x h)** min. 0.50 m x 2.28 m per column branding

**Hire Charge** 595.00 EUR per column branding

**Production/ Installation** 155.00 EUR per column branding

**Status** **Availability upon request.**



## Up to 16 Column Brandings in Hall 19

**Location** -up to 8 brandings at the access to Hall 18  
-up to 8 brandings at the access to Hall 20

**Size (w x h)** 0.45 m x 2.49 m per column branding

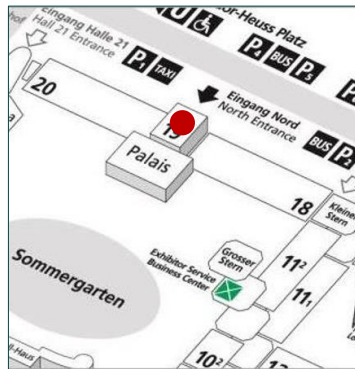
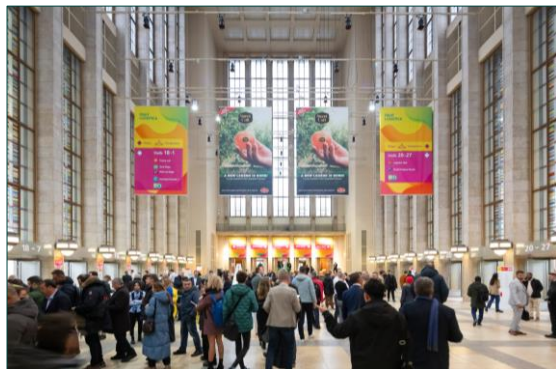
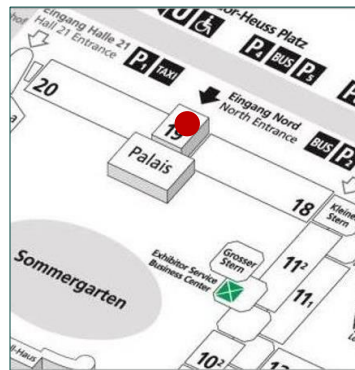
**Hire Charge** 595.00 EUR per column branding

**Production/ Installation** 155.00 EUR per column branding

**Status** **Availability upon request.**  
**Important Note: These brandings are exclusively reserved for the exhibitors located in the respective halls.**



# ENTRANCE NORTH - INDOORS



## OPTION A: 1 Mega-Banner in Hall 19, 2-sided

- Location** 1 suspended mega-banner directly in Hall 19 in the access areas to Halls 18 and 20
- Size (w x h)** 16.00 m x 5.00 m per side (print on front and back side)
- Hire Charge** 24,950.00 EUR for 1 double-sided mega-banner
- Production/ Installation** 5,850.00 EUR for 1 double-sided mega-banner
- Status** **Availability upon request.**

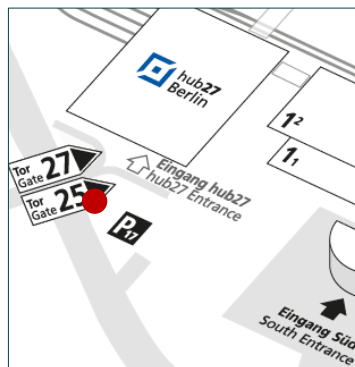
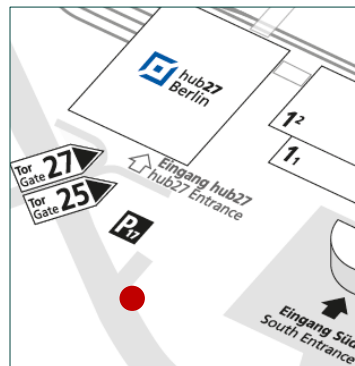
## OPTION B: Up to 5 Mega-Banners in Hall 19, each 2-sided

- Location** Up to 5 suspended banners directly in Hall 19 in the access areas to Halls 18 and 20
- Size (w x h)** 3.00 m x 5.00 m per double-sided banner (print on front and back side)
- Hire Charge** 6,165.00 EUR per double-sided banner
- Production/ Installation** 860.00 EUR per double-sided banner
- Status** **Availability upon request.**

ON-SITE  
ADVERTISING  
ENTRANCE  
SOUTH  
SURROUNDINGS



# ENTRANCE SOUTH – SURROUNDINGS



## 1 Advertising Tower at the Access to the Parking Areas, 4-sided

<b>Location</b>	at the access to the parking areas of Entrance South at "Jafféstraße"
<b>Size (w x h)</b>	east & west side/ main road: 8.75 m x 8.11 m each north side/ car park & south side/ main road: 5.75 m x 8.11 m each
<b>Hire Charge</b>	east & west side: each 9,990.00 EUR north & south side: each 5,580.00 EUR
<b>Production/ Installation</b>	east & west side: each 4,015.00 EUR north & south side: each 2,665.00 EUR

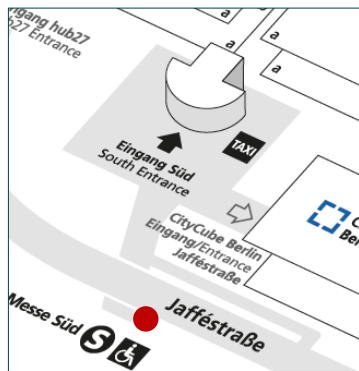
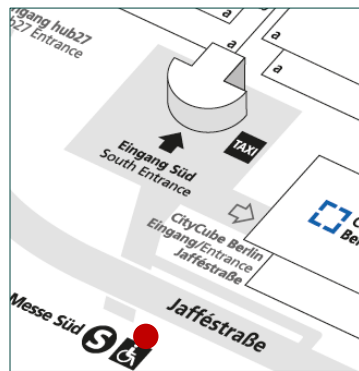
**Status** **Availability upon request.**

## 1 Advertising Tower at Gates 25/ 27, 2-sided

<b>Location</b>	at the access to Gate 25/ hub27/Hall 25 along "Jafféstraße"
<b>Size (w x h)</b>	3.94 m x 9.25 m per side (2 sides in total)
<b>Hire Charge</b>	9,590.00 EUR for both sides
<b>Production/ Installation</b>	3,805.00 EUR for both sides

**Status** **Availability upon request.**

# ENTRANCE SOUTH – SURROUNDINGS



## 66 Step Graphics at the Stairs at the Pedestrian Access

**Location** on the stairs leading up to the bridge which connects the urban railway station "Messe Süd" with the pedestrian access to Entrance South

**Size (w x h)** 3.60 m x 0.14 m per step  
(4 segments with 66 steps in total)

**Hire Charge** 7,930.00 EUR for all 66 steps

**Production/ Installation** 3,565.00 EUR for all 66 steps

**Status** **Availability upon request.**

## Up to 46 Light Pole Brandings at the Pedestrian Access, each 1-sided

**Location** 37 brandings at the street-lamps (left and right side) connecting the urban railway station "Messe Süd" with the pedestrian access to Entrance South plus 9 brandings at the side access

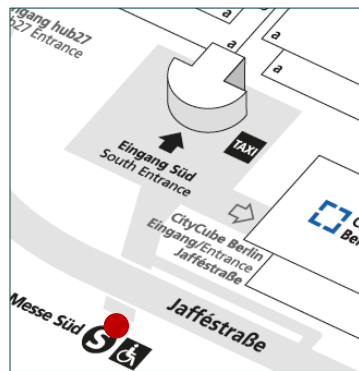
**Size (w x h)** 0.50 m x 1.35 m per branding  
(other formats and shapes are possible)

**Hire Charge** 16,350.00 EUR for all 46 brandings

**Production/ Installation** 4,840.00 EUR for all 46 brandings

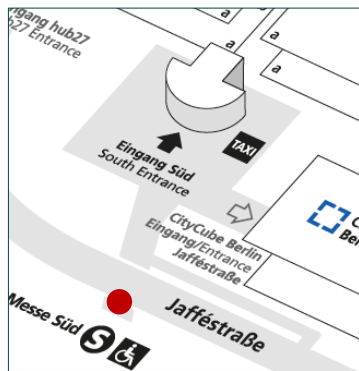
**Status** **Availability upon request.**

# ENTRANCE SOUTH – SURROUNDINGS



## 3 Inner Balustrade Brandings at the Pedestrian Access, each 1-sided

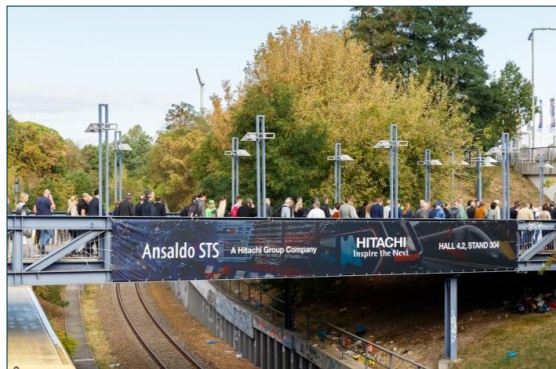
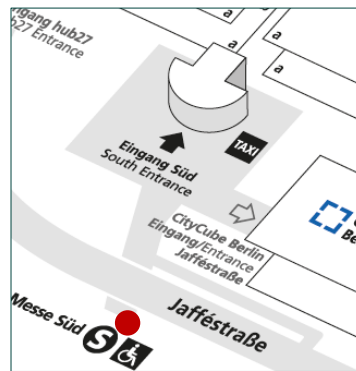
<b>Location</b>	at the bridge left and right connecting the urban railway station "Messe Süd" with the pedestrian access to Entrance South
<b>Size (w x h)</b>	3.12 m x 0.53 m per banner (3 banners in total)
<b>Hire Charge</b>	1,335.00 EUR for all 3 banners
<b>Production/ Installation</b>	415.00 EUR for all 3 banners
<b>Status</b>	<b>Availability upon request.</b>



## 2 Inner Bridge Brandings at the Pedestrian Access, each 1-sided

<b>Location</b>	2 inner brandings at the left and right side of the bridge connecting the urban railway station "Messe Süd" with the pedestrian access to Entrance South
<b>Size (w x h)</b>	24.85 m x 0.80 m per banner (2 banners in total)
<b>Hire Charge</b>	2,015.00 EUR per banner or 4,030.00 EUR for both banners
<b>Production/ Installation</b>	1,190.00 EUR per banner or 2,380.00 EUR for both banners
<b>Status</b>	<b>Availability upon request.</b>

# ENTRANCE SOUTH – SURROUNDINGS



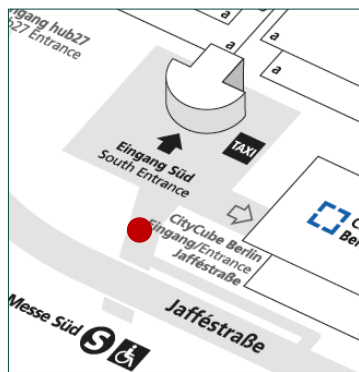
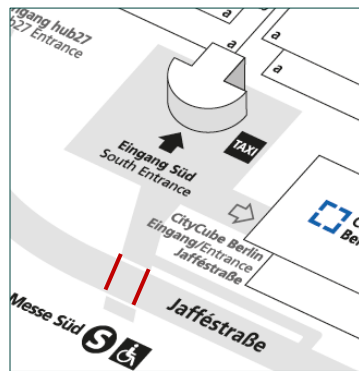
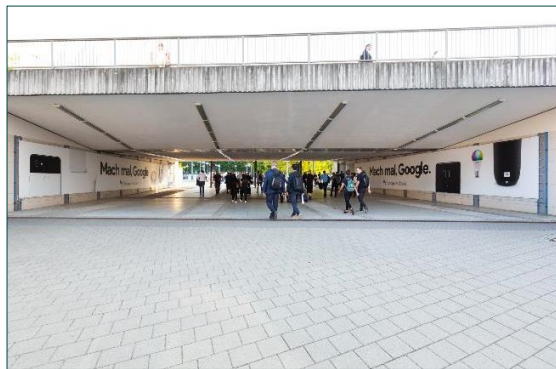
## 1 Outer Bridge Branding at the Pedestrian Access

<b>Location</b>	at the bridge connecting the urban railway station "Messe Süd" with the pedestrian access to Entrance South
<b>Size (w x h)</b>	15.00 m x 1.60 m
<b>Hire Charge</b>	4,865.00 EUR
<b>Production/ Installation</b>	1,330.00 EUR
<b>Status</b>	<b>Availability upon request.</b>

# ON-SITE ADVERTISING ENTRANCE SOUTH



# ENTRANCE SOUTH – OUTDOORS



## 1 Tunnel Branding at the Pedestrian and Taxi Access, 2 sides

**Location** branding of the walls along the pedestrian tunnel between the urban railway station "Messe Süd" and Entrance South

**Size (w x h)** left side: 20.49 m x 2.30 m  
right side: 20.49 m x 2.30 m

**Hire Charge** 10,030.00 EUR for both sides

**Production/ Installation** 5,785.00 EUR for both sides

**Status** **Availability upon request.**

## 5 Poster Showcases, each 2-sided

**Location** 5 showcases along the pedestrian and taxi access to Entrance South

**Size (w x h)** 1.15 m x 1.71 m per poster  
(2 posters per showcase for front and back side)

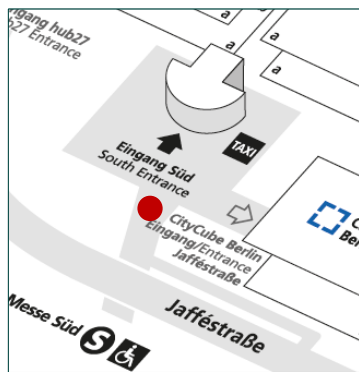
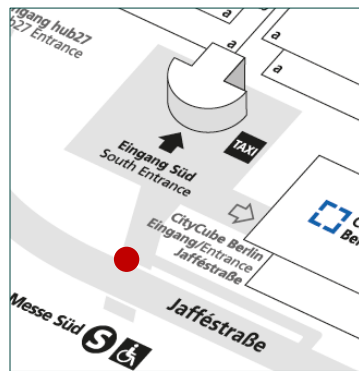
**Hire Charge** 6,250.00 EUR for 5 showcases

**Production/ Installation** 11,450.00 EUR for 5 showcases

**Status** **Availability upon request.**



# ENTRANCE SOUTH – OUTDOORS



## 3 Advertising Plates at the Pedestrian and Taxi Access

**Location** at the pedestrian and taxi access to Entrance South

**Size (w x h)** 3.50 m x 6.70 m per banner  
(3 banners in total)

**Hire Charge** e.g. 4,315.00 EUR per banner  
e.g. 12,950.00 EUR for all 3 plates

**Production/ Installation** e.g. 2,330.00 EUR per banner  
e.g. 5,830.00 EUR for all 3 banners

**Status** **Availability upon request.**

## Floor Graphics at the Pedestrian and Taxi Access

**Location** on the pedestrian and next to the taxi access to Entrance South

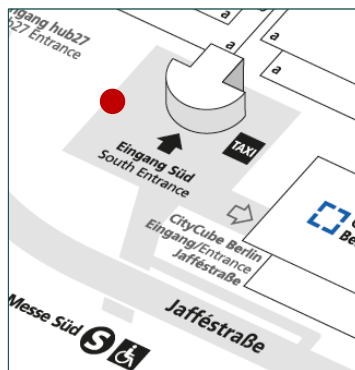
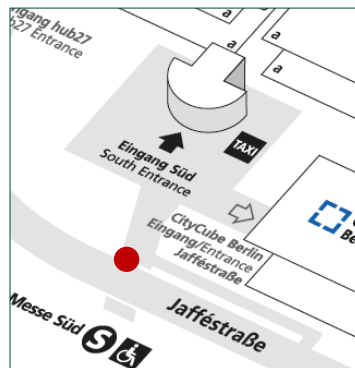
**Size (w x h)** e.g. 2.40 x 2.40 per floor graphic  
Special formats on demand.

**Hire Charge** 1,075.00 EUR per floor graphic

**Production/ Installation** 670.00 Euro per floor graphic

**Status** **Availability upon request.**

# ENTRANCE SOUTH – OUTDOORS



## 1 Bridge Branding

**Location** 2 banners at the balustrade and branding of the exterior left wall of the bridge at the pedestrian and taxi access to Entrance South

**Size (w x h)** 2 railings: 23.10 m x 0.90 m per banner; 1 wall trapezium shape: min. 76 m<sup>2</sup> (left side coming from the urban railway station)

**Hire Charge** 17,265.00 EUR in total

**Production/ Installation** 6,245.00 EUR in total

**Status** **Availability upon request.**

## 1 Advertising Tower at the Plaza on the left side, 4-sided

**Location** directly on the left hand side of the plaza of Entrance South

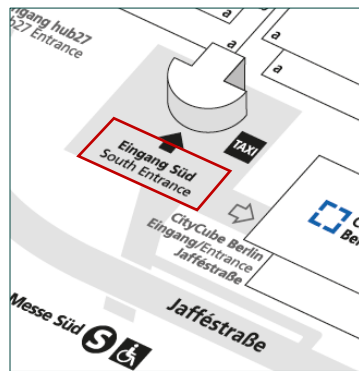
**Size (w x h)** south side/plaza & north side/ Hall 1: 8.75 m x 8.11 m each  
east side/ plaza and west side/ hub27: 5.75 m x 8.11 m each

**Hire Charge** south side/ plaza: 10,190.00 EUR  
east side/ plaza: 6,700.00 EUR  
west side/ hub27: 4,650.00 EUR  
north side/ Hall 1: 5,095.00 EUR

**Production/ Installation** south & north side: 4,015.00 EUR  
east & west side: 2,665.00 EUR

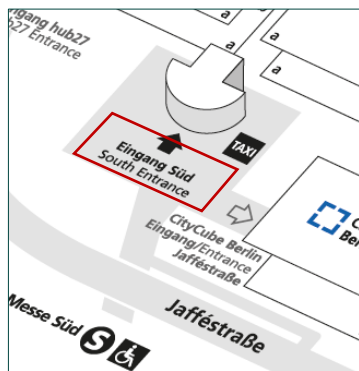
**Status** **Availability upon request.**

# ENTRANCE SOUTH – OUTDOORS



## Mobile Advertising Towers, each 4-sided

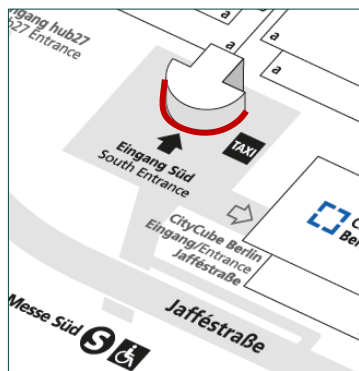
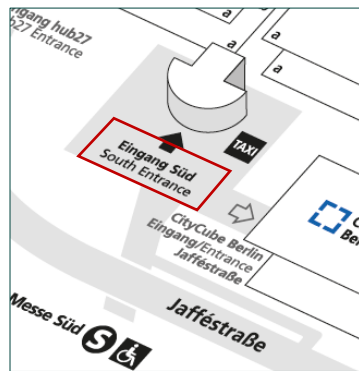
<b>Location</b>	positions by arrangement on the plaza of Entrance South
<b>Size (w x h)</b>	Small: 2.302 m x 4.15 m per side Big: 3.302 m x 6.15 m per side (4 sides per tower)
<b>Hire Charge</b>	Small: 5,490.00 EUR per tower Big: 13,300.00 EUR per tower
<b>Production/ Installation</b>	Small: 2,970.00 EUR per tower Big: 4,995.00 EUR per tower
<b>Status</b>	<b>Availability upon request.</b>



## Advertising Balloons on the Plaza

<b>Location</b>	positions by arrangement on the plaza of Entrance South
<b>Size (w x h)</b>	e.g. 3.00 m diameter per balloon other formats, sizes and special shapes on demand
<b>Hire Charge</b>	e.g. 9,260.00 EUR per balloon
<b>Production/ Installation</b>	on demand (depending on shape and Feasibility)
<b>Status</b>	<b>Availability upon request.</b>

# ENTRANCE SOUTH – OUTDOORS



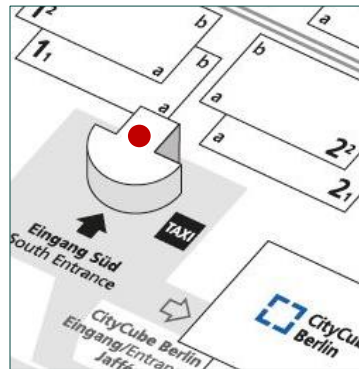
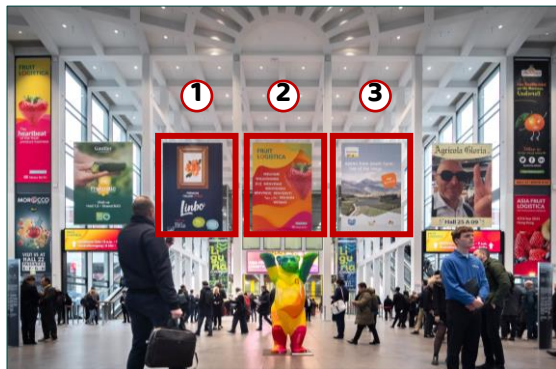
## Promotional Areas for Mobile Exhibits

- Location** An eye-catching advertising inflatable or mobile exhibit supplied by the exhibitor is placed at a highly frequented location as for example on the plaza of Entrance South. A detailed overview of all positions will be gladly provided anytime.
- Size (w x h)** approx. 3.00 m x 3.00 m per position
- Hire Charge** from 4,075.00 EUR per position
- Status** **Availability upon request.**

## Up to 20 Door Brandings at the Entrance Hall (outdoor and indoor)

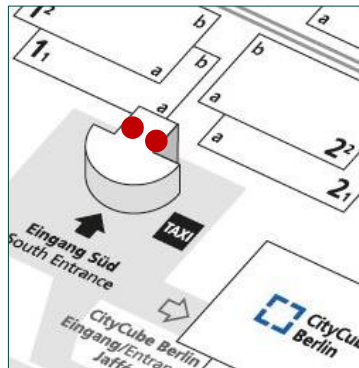
- Location** directly above the revolving doors of the Entrance Hall outdoors and indoors:  
 - 10 brandings can be installed above 10 revolving outer doors (see exemplary red mark on the left photo) and  
 - 10 brandings can be placed above the respective inner doors
- Size (w x h)** 2.35 m x 0.485 m per outer branding  
 1.76 m x 0.435 m per inner branding
- Hire Charge** 10,650.00 EUR for all 20 brandings
- Production/ Installation** 1,585.00 EUR for all 20 brandings
- Status** **Availability upon request.**

# ENTRANCE SOUTH – INDOORS



## 3 Mega-Banners in the Entrance Hall, each 2-sided

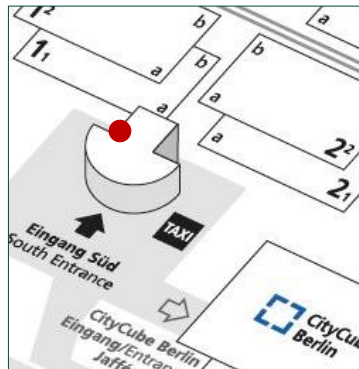
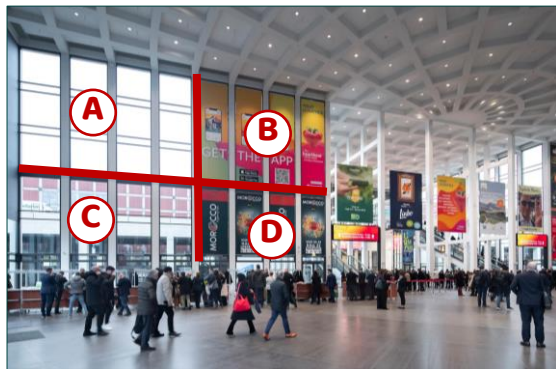
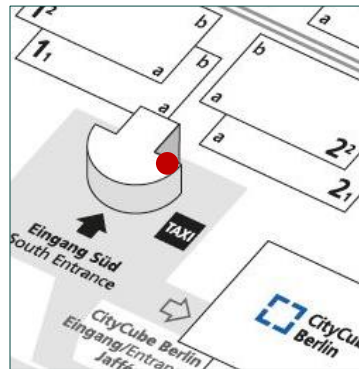
<b>Location</b>	up to 3 suspended banners in the Entrance Hall
<b>Size (w x h)</b>	4.00 m x 6.00 m per double-sided banner (print on front and back side)
<b>Hire Charge</b>	4,935.00 EUR per double-sided banner
<b>Production/ Installation</b>	2,875.00 EUR per double-sided banner
<b>Status</b>	<b>Availability upon request.</b>



## 2 LED Displays with Banners above the Escalators

<b>Location</b>	2 combi-packages are available. Each package consists of 1 double-sided mega-banner in combination with a new 1-sided LED display in the entrance hall at the outer sides left and right directly above the escalators
<b>Size (w x h)</b>	Mega-banners, 2-sided: max. 4.00 m x 5.70 m per double-sided banner
<b>Technical Specs</b>	LED displays, 1-sided: FULL-HD display/ 2.5 mm pixel pitch 20 MBit/ 60 fps/ content 32:9 LED dimensions: 4.86 m x 1.36 m each; resolution: 3840 x 1080 pixel each
<b>Special Combi Price</b>	11,460.00 EUR for a 30 sec. spot within a loop with organizer content (content has to be delivered by the exhibitor) and the Mega Banner located above the screen
<b>Status</b>	<b>Availability upon request.</b>

# ENTRANCE SOUTH – INDOORS



## 4 Window Brandings in the Entrance Hall on the right side

**Location** 4 banners per branding at the windows (see brandings A to D)

**Size (w x h)**  
 A: 2.33 m x 8.25 m per banner  
 B: 2.33 m x 8.25 m per banner  
 C: 2.33 m x 5.30 m per banner  
 D: 2.33 m x 5.30 m per banner

**Hire Charge**  
 8,305.00 EUR for A or B  
 5,340.00 EUR for C or D

**Production/ Installation**  
 5,255.00 EUR for A or B  
 3,750.00 EUR for C or D

**Status** **Availability upon request.**

## 4 Window Brandings in Entrance Hall on the left side

**Location** 4 banners per branding at the windows (see brandings A to D)

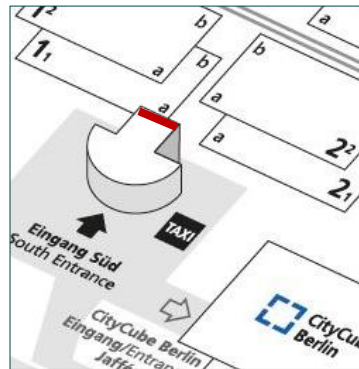
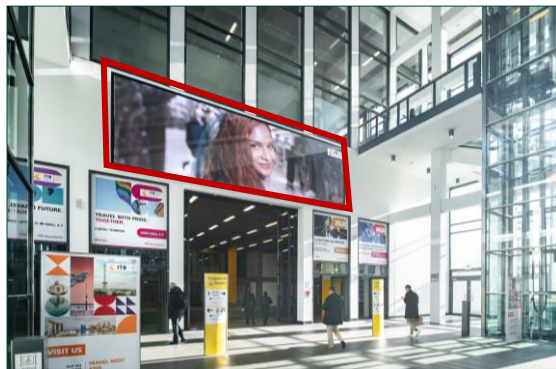
**Size (w x h)**  
 A: 2.33 m x 8.25 m per banner  
 B: 2.33 m x 8.25 m per banner  
 C: 2.33 m x 5.30 m per banner  
 D: 2.33 m x 5.30 m per banner

**Hire Charge**  
 8,305.00 EUR for A or B  
 5,340.00 EUR for C or D

**Production/ Installation**  
 5,255.00 EUR for A or B  
 3,750.00 EUR for C or D

**Status** **Availability upon request.**

# ENTRANCE SOUTH – INDOORS



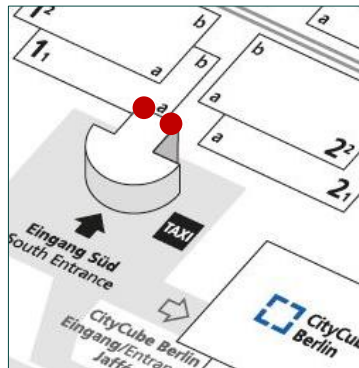
## 1 Exclusive LED Mega-Display in the Entrance Hall

**Location** above the entrance doors to the middle foyers of Halls 1.1/ 2.1

**Technical Specs** FULL-HD Display/ 2,5 mm pixel pitch  
20 MBit / 60 fps/ Content 32:9 LED  
Dimensions: 10.08 m x 2.88 m Resolution: 4032 x 1152 pixel

**Hire Charge** 13,765.00 EUR for a 30 sec. spot within a loop with organizer content (content has to be delivered by the exhibitor)

**Status** **Availability upon request.**



## Up to 8 Window Brandings in the Entrance Hall on the entrance level

**Location** in the Entrance Hall at the access to Halls 1.1 to 6.1 (see red marks on the photo)

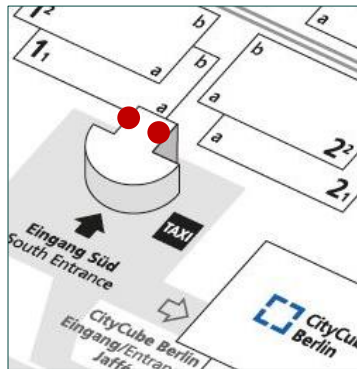
**Size (w x h)** 2.34 m x 2.35 m per window branding (see exemplary red mark on the photo)

**Hire Charge** 4,920.00 EUR for 4 front sides  
2,470.00 EUR for 4 back sides  
(6,880.00 EUR for 8 brandings)

**Production/ Installation** 2,630.00 EUR for 4 brandings  
2,630.00 EUR for 4 brandings  
(4,065.00 EUR for 8 brandings)

**Status** **Availability upon request.**

# ENTRANCE SOUTH – INDOORS



## 4 Rail Graphics at the Stairs in the Entrance Hall, each 2-sided

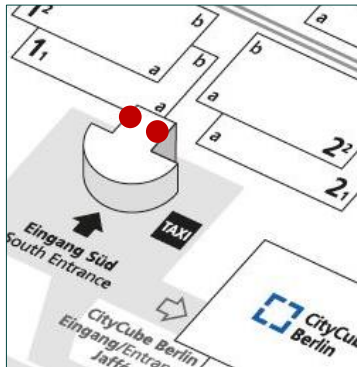
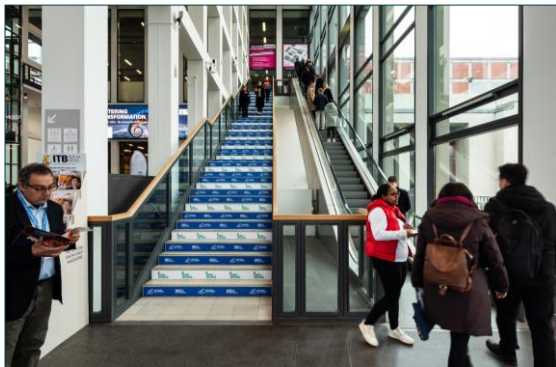
**Location** 2 stairs with 4 segmented rails in the Entrance Hall on the left and right hand side (see red marks on the photo)

**Size** The stencils will be gladly provided separately.

**Hire Charge** e.g. 7,315.00 EUR for both stairs, i.e. for 4 segmented rail graphics

**Production/ Installation** on demand (depending on technical implementation)

**Status** **Availability upon request.**



## 120 Step Graphics at the Stairs in the Entrance Hall

**Location** 2 stairs with 120 steps in the Entrance Hall on the left and right hand side

**Size (w x h)** 1.83 m x 0.135 m per step graphic (60 step graphics per stair)

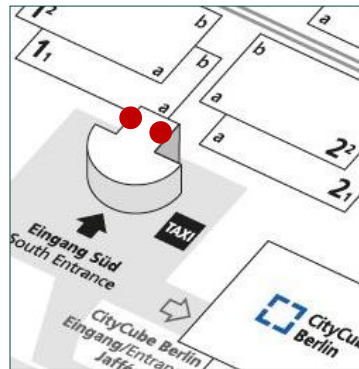
**Hire Charge** 8,265.00 EUR for both stairs, i.e. for 120 step graphics in total

**Production/ Installation** 2,880.00 EUR for both stairs, i.e. for 120 step graphics in total

**Status** **Availability upon request.**

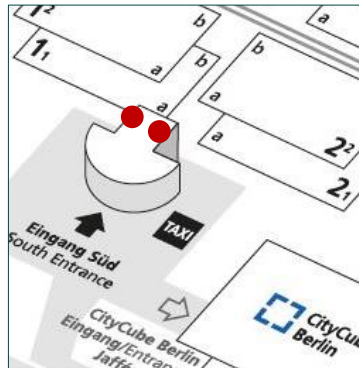
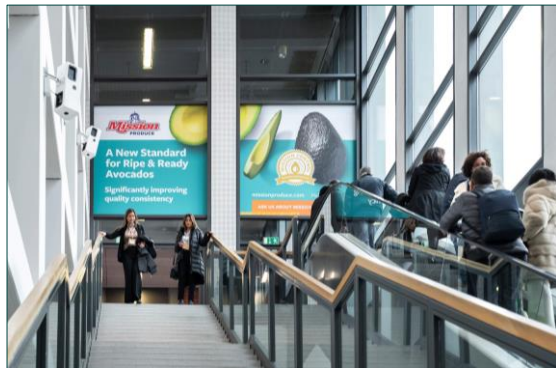


# ENTRANCE SOUTH – INDOORS



## 4 Balustrade Graphics along Escalators

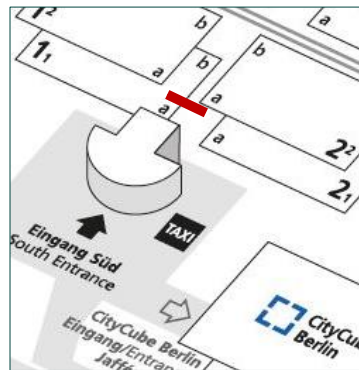
<b>Location</b>	2 escalators with 4 balustrades in the Entrance Hall on the left and right hand sides
<b>Size</b>	approx. 128.00 m <sup>2</sup> for all 4 balustrade graphics (2-sided)
<b>Hire Charge</b>	6,225.00 EUR for both escalators, i.e. for 4 balustrade graphics in total
<b>Production/ Installation</b>	10,775.00 EUR for both escalators, i.e. for 4 balustrade graphics in total
<b>Status</b>	<b>Availability upon request.</b>



## Up to 8 Window Brandings in the Entrance Hall on the upper level

<b>Location</b>	access area to Halls 1.2 to 6.2 coming from the escalators and stairs (left and right side)
<b>Size (w x h)</b>	2.33 m x 2.375 m per window cling (8 brandings in total)
<b>Hire Charge</b>	4,920.00 EUR for 4 front sides 2,470.00 EUR for 4 back sides (6,880.00 EUR for 8 brandings)
<b>Production/ Installation</b>	2,630.00 EUR for 4 brandings 2,630.00 EUR for 4 brandings (4,065.00 EUR for 8 brandings)
<b>Status</b>	<b>Availability upon request.</b>

# ENTRANCE SOUTH – INDOORS



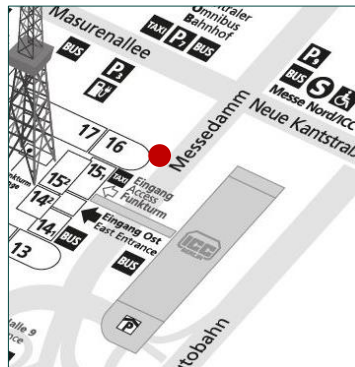
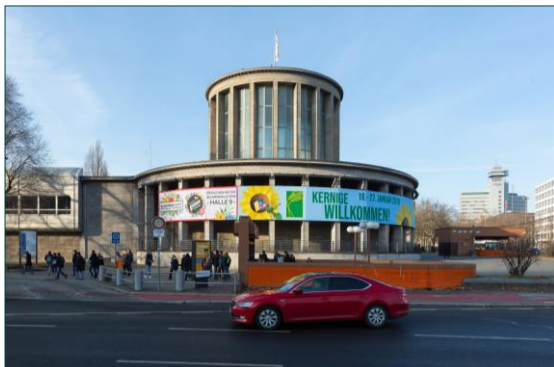
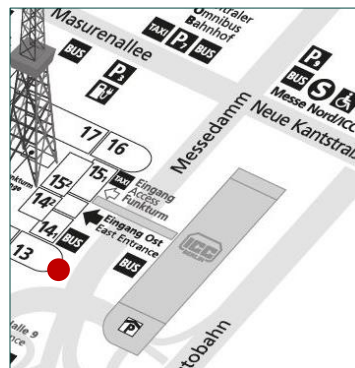
## Entrance Banner to the Middle Foyers of Halls 1.2/ 2.2

<b>Location</b>	above the entrance doors to the middle foyers of Halls 1.2/ 2.2
<b>Size (w x h)</b>	24.00 m x 3.00 m (smaller formats are possible)
<b>Hire Charge</b>	11,600.00 EUR
<b>Production/ Installation</b>	4,090.00 EUR
<b>Status</b>	<b>Availability upon request.</b>

# ON-SITE ADVERTISING "MESSEDAMM" HIGH TRAFFIC AREA



# HIGH TRAFFIC AREA



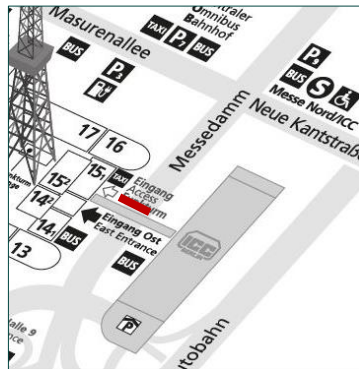
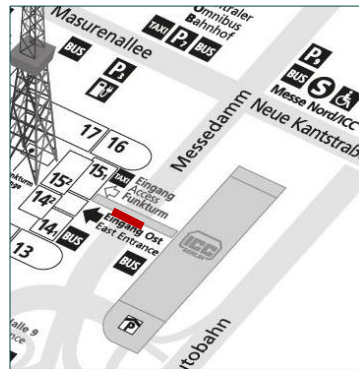
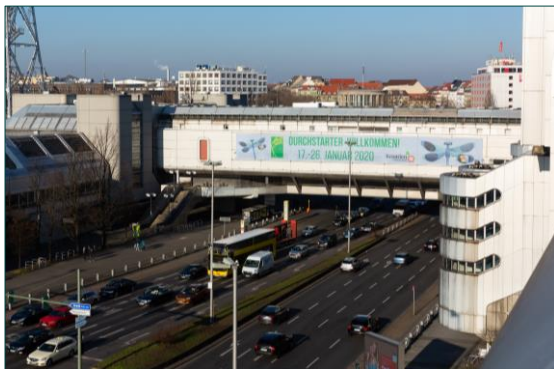
## 1 Rotunda Hall 13

- Location** Rotunda Hall 13 at the main road "Messedamm": ascend and descend to highway
- Size (w x h)** 17 components: 51.68 m x 3.00 m, thereof 5 components for exhibitor advertising: 15.20 m x 3.00 m
- Hire Charge** e.g. 7,845.00 EUR for 5 components
- Production/ Installation** e.g. 3,205.00 EUR for 5 components
- Status** **Availability upon request.**

## 1 Rotunda Hall 16

- Location** Rotunda Hall 16 at the cross-way between "Messedamm", "Masurenallee" and "Neue Kantstraße"
- Size (w x h)** 18 components: 54.72 m x 3.00 m, thereof 5 components for exhibitor advertising: 15.20 m x 3.00 m
- Hire Charge** e.g. 7,845.00 EUR for 5 components
- Production/ Installation** e.g. 3,205.00 EUR for 5 components
- Status** **Availability upon request.**

# HIGH TRAFFIC AREA



## 1 Mega-Banner at the ICC Bridge South

**Location** at the ICC Bridge South directly above the main road "Messedamm": connection between the ICC Berlin and the Berlin exhibition site

**Size (w x h)** 40.00 m x 4.20 m  
(smaller sizes can be realized)

**Hire Charge** 20,730.00 EUR

**Production/ Installation** 4,565.00 EUR

**Status** **Availability upon request.**

## 1 Mega-Banner at the ICC Bridge North

**Location** at the ICC Bridge North directly above the main road "Messedamm": connection between the ICC Berlin and the Berlin exhibition site

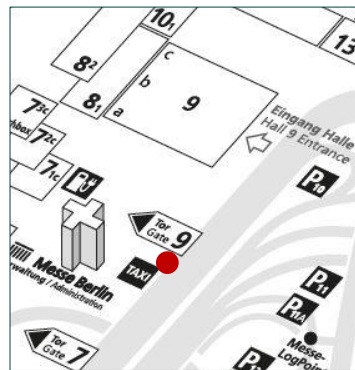
**Size (w x h)** 40.00 m x 4.20 m  
(smaller sizes can be realized)

**Hire Charge** 20,730.00 EUR

**Production/ Installation** 4,565.00 EUR

**Status** **Availability upon request.**

# HIGH TRAFFIC AREA



## 1 Mega-Banner plus 2 lateral Banners next to the HQ

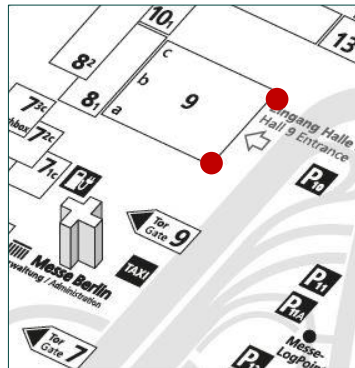
**Location** at the Headquarters of Messe Berlin facing "Messedamm" next to the access to Gate 9 and the taxi stop

**Size (w x h)**  
 1 front side banner: 9.20 m x 5.95 m  
 2 side banners: 2.90 m x 5.90 m each

**Hire Charge** 7,510.00 EUR

**Production/ Installation** 7,010.00 EUR

**Status** **Availability upon request.**



## 2 Mega-Banners at the Facades of Hall 9

**Location** at the Facades of Hall 9 on the left and right hand side facing "Messedamm"

**Size (w x h)**  
 visible size: 16.20 m x 8.55 m  
 production size: 16.40 m x 8.75m

**Hire Charge** 14,770.00 EUR per banner

**Production/ Installation** 5,025.00 EUR per banner

**Status** **Availability upon request.**

# HIGH TRAFFIC AREA



## 1 Entrance Banner to Hall 9, backlit

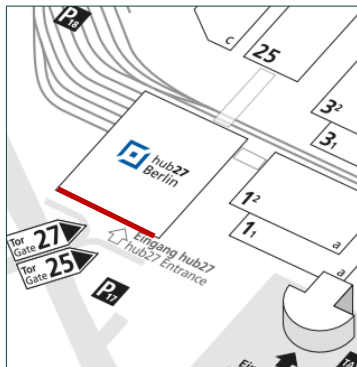
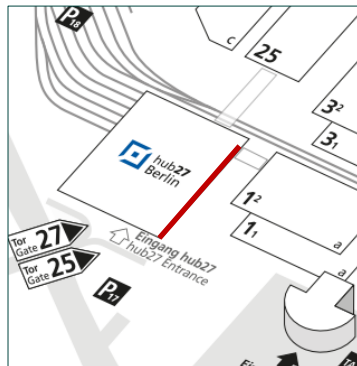
<b>Location</b>	directly above the entrance doors to Hall 9 facing Messedamm
<b>Size (w x h)</b>	9.60 m x 2.30 m
<b>Hire Charge</b>	4,140.00 EUR
<b>Production/ Installation</b>	1,296.00 EUR
<b>Status</b>	<b>Availability upon request.</b>

# ON-SITE ADVERTISING HALL 27





# HALL 27 – OUTDOORS



## Mega-Banners on the Facade of hub27, East Side

<b>Location</b>	banners on the eastern facade of hub27 Facing Entrance South and Hall 1 (see red marks on the left picture)	
<b>Size (w x h)</b>	position 1: 19.60 m x 5.75 m; position 3: 7.05 m x 14.95 m other sizes, positions and formats on demand	position 2: 7.30 m x 14.95 m
<b>Hire Charge</b>	position 1: 15,440.00 EUR; position 3: 14,440.00 EUR	position 2: 14,950.00 EUR
<b>Production/ Installation</b>	position 1: 5,630.00 EUR; position 3: 5,370.00 EUR	position 2: 5,490.00 EUR

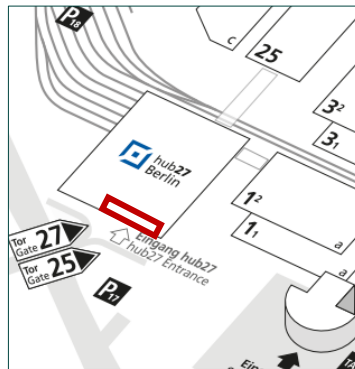
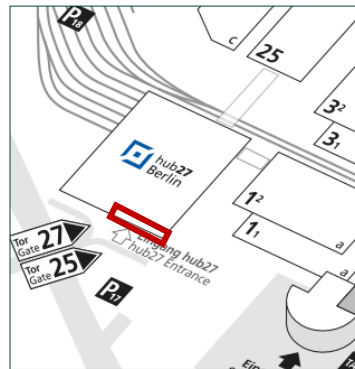
**Status** Availability upon request.

## Mega-Banners on the Facade of hub27, South Side

<b>Location</b>	banners on the southern facade of hub27 Facing Jafféstraße (see red marks on the left picture)	
<b>Size (w x h)</b>	position 1: 8.60 m x 5.75 m position 2: 17.35 x 15.00 m other sizes, positions and formats on demand	
<b>Hire Charge</b>	position 1: 6,785.00 EUR position 2: 35,710.00 EUR	
<b>Production/ Installation</b>	position 1: 4,700.00 EUR position 2: 12,910.00 EUR	

**Status** Availability upon request.

# HALL 27 – OUTDOORS



## Window Brandings above Entrance Doors

**Location** adhesive foils on the windows at various locations:  
e.g. 5 positions above the entrance doors - outdoors

**Size (w x h)** positions 1 and 5: each 1.70 m x 2.52 m  
positions 2 to 4: each 2.40 m x 2.52 m

**Hire Charge** 9,450.00 EUR for all 5 window brandings

**Production/ Installation** 1,925.00 EUR for all 5 window brandings

**Status** **Availability upon request.**

## 4 Pillar Brandings at the Entrance Area to Hall 27, each 4-sided

**Location** pillars side by side at the Entrance to hub27 (4 sides per pillar)

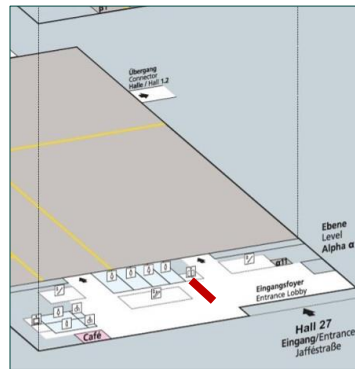
**Size (w x h)** complete version: 0.55 m x 4.10 m per side  
short version: 0.55 m x 2.80 m per side (see exemplary photo)

**Hire Charge** complete version: 2,140.00 EUR per 4-sided pillar branding  
short version: 1,460.00 EUR per 4-sided pillar branding

**Production/ Installation** complete version: 1,475.00 EUR per 4-sided pillar branding  
short version: 1,375.00 EUR per 4-sided pillar branding

**Status** **Availability upon request.**

# HALL 27 – INDOORS



## Hanging Banner in the Entrance Foyer ,2-sided

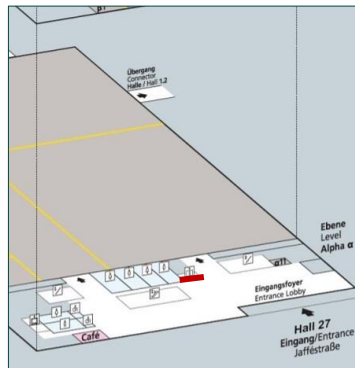
**Location** in the Entrance Foyer of hub27 in front of the escalators and stairs, 2-sided

**Size (w x h)** 7.00 m x 0.992 m per double-sided banner (print on front and back side)

**Hire Charge** e.g. 4,220.00 EUR per double-sided banner

**Production/ Installation** e.g. 1,750.00 EUR per double-sided banner

**Status** **Availability upon request.**



## Hanging Banners in the Entrance Foyer, each 1-sided

**Location** e.g. in the Entrance Foyer next to the elevator and the right entrance to the event hall

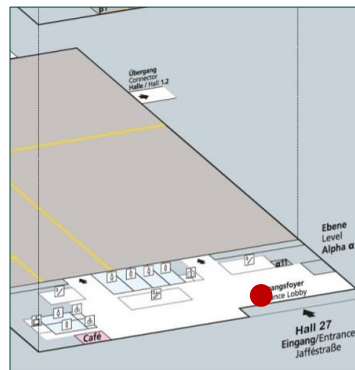
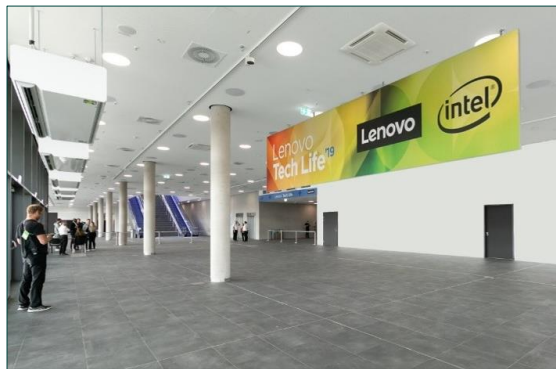
**Size (w x h)** e.g. 9.40 m x 1.90 m  
Other positions and formats are possible.

**Hire Charge** e.g. 5,430.00 EUR

**Production/ Installation** e.g. 2,055.00 EUR

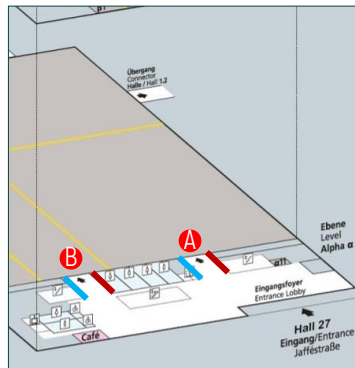
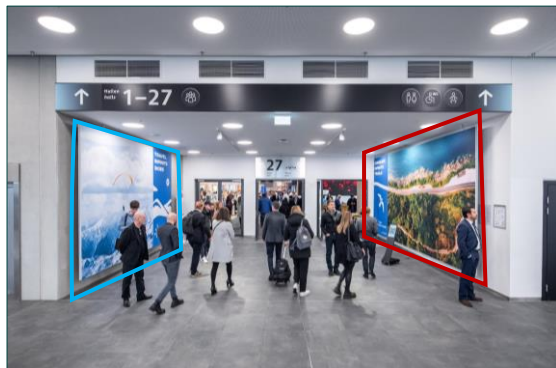
**Status** **Availability upon request.**

# HALL 27 – INDOORS



## Hanging Banners in the Entrance Foyer, each 2-sided

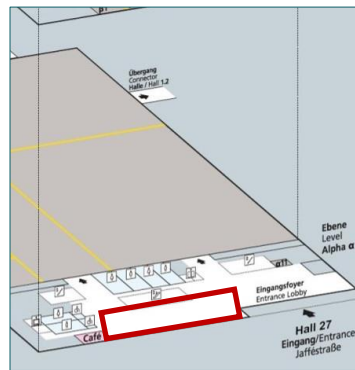
- Location** e.g. in the Entrance Foyer in front of the entrance/ exit doors  
Other positions and formats are possible
- Size (w x h)** e.g. 9.45 m x 2.00 m
- Hire Charge** e.g. 6,250.00 EUR per double-sided banner
- Production/ Installation** e.g. 2,520.00 EUR per double-sided banner
- Status** **Availability upon request.**



## Entrance Banners each Area to the Event Hall A

- Location** banners on the walls next to the entrances to the Event Hall – Alpha Level: 2 entrances (see A and B) with 2 banners each.
- Size (w x h)** left banners: 5.00 m x 3.10 m (see blue marks on the left)  
right banners: 6.50 m x 3.10 m (see red marks on the left)
- Hire Charge** left banner: 3,175.00 EUR  
right banner: 5,160.00 EUR
- Production/ Installation** left banner: 1,450.00 EUR  
right banner: 1,970.00 EUR
- Status** **Availability upon request.**

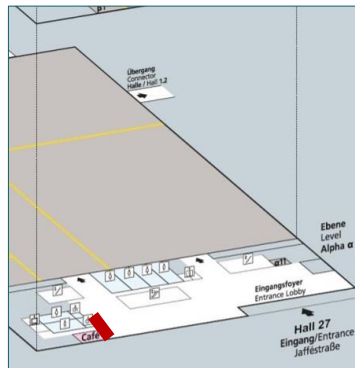
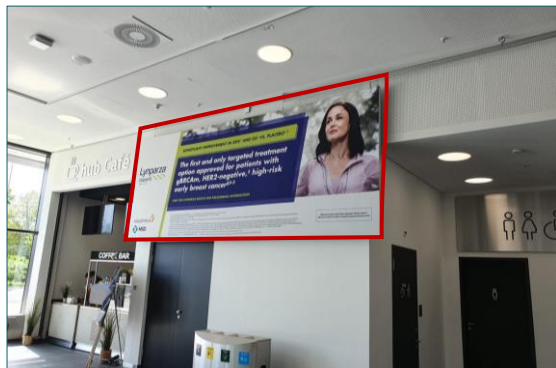
# HALL 27 – INDOORS



## 8 Pillar Brandings, each 4-sided

<b>Location</b>	8 pillars side by side directly in the Entrance Foyer
<b>Size (w x h)</b>	complete version: 0.60 m x 4.10 m per side (see left picture) short version: 0.60 m x 2.80 m per side
<b>Hire Charge</b>	complete version: 2,740.00 EUR per 4-sided pillar branding short version: 1,870.00 EUR per 4-sided pillar branding
<b>Production/ Installation</b>	complete version: 1,475.00 EUR per 4-sided pillar branding short version: 1,375.00 EUR per 4-sided pillar branding

**Status** Availability upon request.

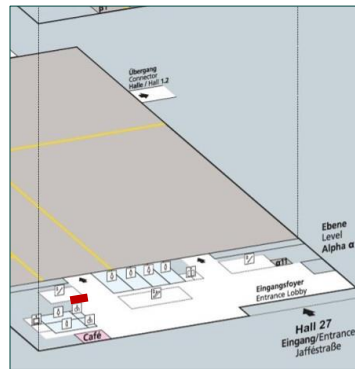
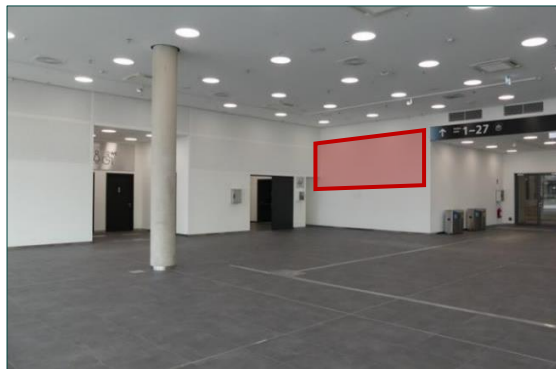


## Banner next to the hub-Café

<b>Location</b>	in the entrance lobby of hub27 next to the hub-café entrance
<b>Size (w x h)</b>	approx. 4.75 m x 1.90 m
<b>Hire Charge</b>	2,600.00 EUR
<b>Production/ Installation</b>	1,210.00 EUR

**Status** Availability upon request.

# HALL 27 – INDOORS



## Banner next to the Event Hall on the left hand side

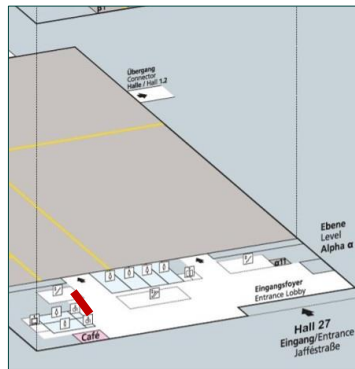
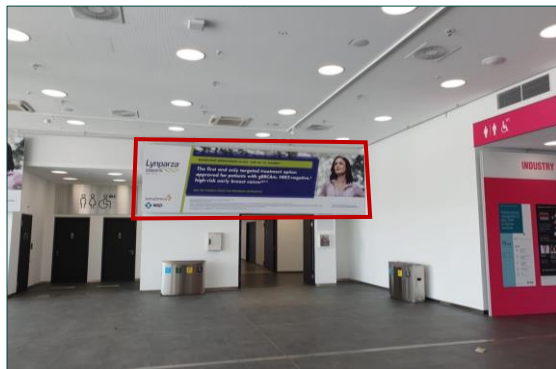
**Location** banner in the entrance lobby of hub27 beside the hall entrance on the left hand side

**Size (w x h)** approx. 5.20 m x 1.90 m

**Hire Charge** 2,750.00 EUR

**Production/ Installation** 1,210.00 EUR

**Status** **Availability upon request.**



## Banner next to the Hall Entrance

**Location** in the entrance lobby of hub27 beside the hall entrance (see red marks on the left photo and map)

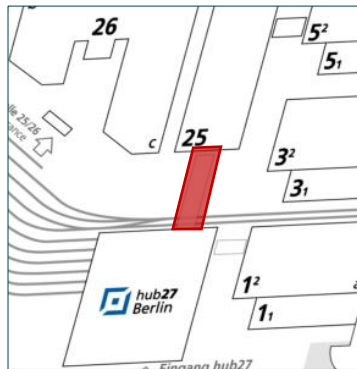
**Size (w x h)** 6.96 m x 1.90 m

**Hire Charge** 3,675.00 EUR

**Production/ Installation** 1,560.00 EUR

**Status** **Availability upon request.**

# HALL 27 – INDOORS



## Passageway Banners between hub27 and Hall 25, 2-sided

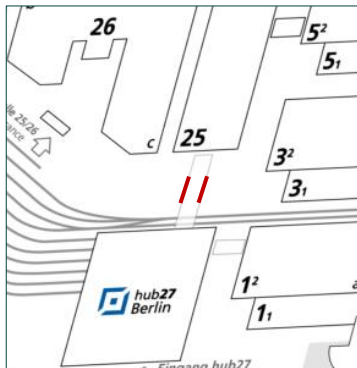
**Location** up to 3 passageway banners between hub27 and Hall 25 (see red mark on the left map)

**Size (w x h)** e.g. 10.60 m x 2.00 m per side (2 sides per banner) other sizes and formats on demand

**Hire Charge** e.g. 8,075.00 EUR per 2-sided banner

**Production/ Installation** e.g. 2,290.00 EUR per 2-sided banner

**Status** **Availability upon request**



## Lateral Passageway Banners between hub27 and Hall 25

**Location** up to 2 lateral passageway banners between hub27 and Hall 25 (see red marks on the left map)

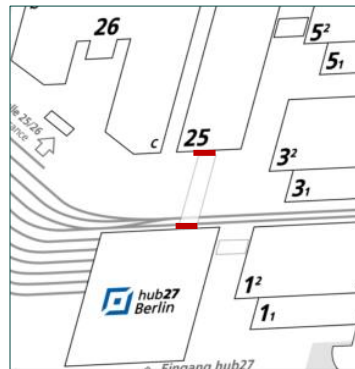
**Size (w x h)** 5.05 m x 3.50 m per banner

**Hire Charge** 4,490.00 EUR per banner

**Production/ Installation** 825.00 EUR per banner

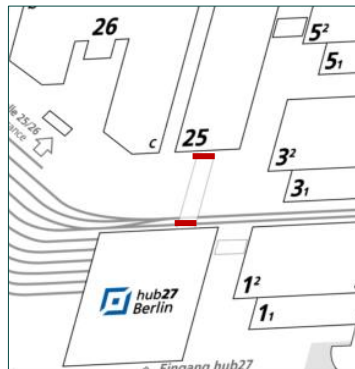
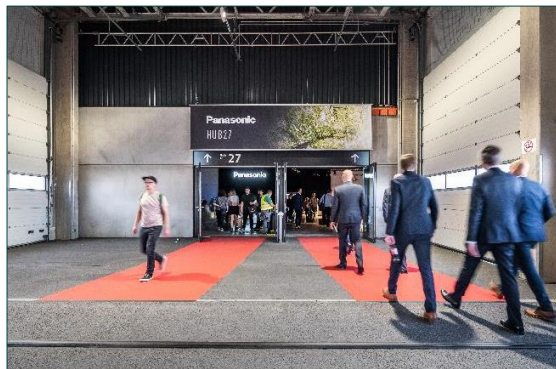
**Status** **Availability upon request**

# HALL 27 – INDOORS



## Option A: Entrance Banners to hub27 and Hall 25

<b>Location</b>	2 entrance banners in the passageway between hub 27 and Hall 25, each 1-sided (see red marks on the left map)
<b>Size (w x h)</b>	10.60 m x 2.00 m per banner
<b>Hire Charge</b>	8,075.00 EUR per banner
<b>Production/ Installation</b>	1,515.00 EUR per banner
<b>Status</b>	<b>Availability upon request</b>

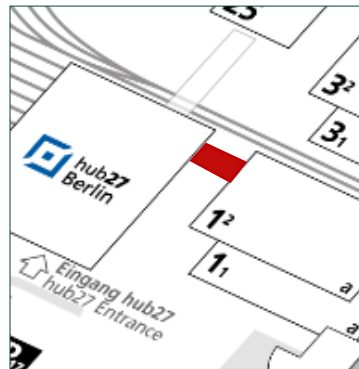
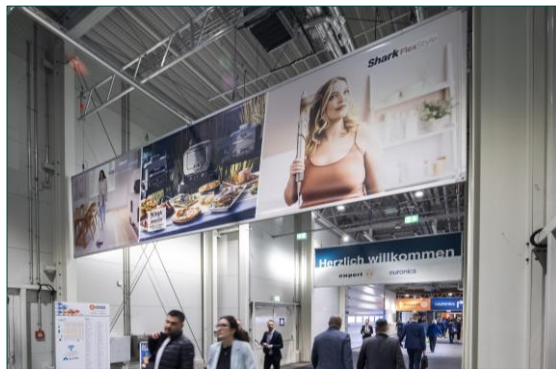


## Option B: 2 Entrance Banners to hub27 and Hall 25

<b>Location</b>	2 entrance banners in the passageway between hub 27 and Hall 25, each 1-sided (see red marks on the left map)
<b>Size (w x h)</b>	6.05 m x 1.45 m per banner
<b>Hire Charge</b>	2,225.00 EUR per banner
<b>Production/ Installation</b>	920.00 EUR per banner
<b>Status</b>	<b>Availability upon request</b>

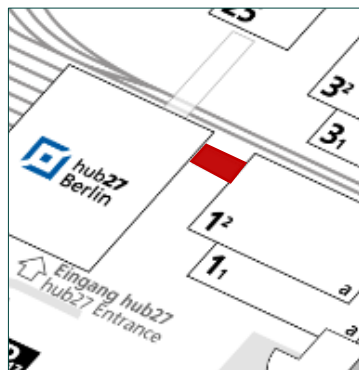
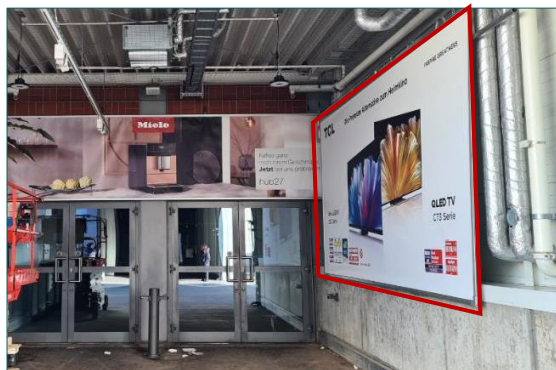


# HALL 27 – INDOORS



## Passageway Banners between hub27 and Hall 1.2

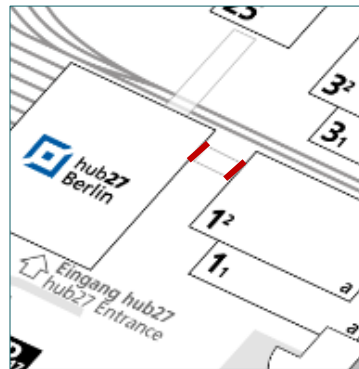
- Location** up to 3 passageway banners between hub27 and Hall 1.2, each 2-sided (see red mark on the left map)
- Size (w x h)** e.g. 6.05 m x 1.45 m per double-sided banner  
other sizes and formats possible
- Hire Charge** e.g. 2,230.00 EUR per double-sided banner
- Production/ Installation** e.g. 1,335.00 EUR per double-sided banner
- Status** **Availability upon request.**



## Lateral Passageway Banners between hub27 and Hall 1.2

- Location** up to 8 lateral passageway banners between hub27 and Hall 1.2 (see red mark on the left map and photo)
- Size (w x h)** e.g. 5.00 m x 2.50 m  
other sizes and formats are possible
- Hire Charge** e.g. 3,170.00 EUR per banner
- Production/ Installation** e.g. 735.00 EUR per banner
- Status** **Availability upon request.**

# HALL 27 – INDOORS



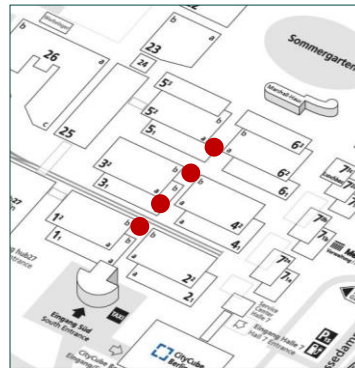
## 2 Entrance Banners between hub27 and Hall 1.2

<b>Location</b>	2 entrance banners at the entrances to hub27 and Hall 1.2, each 1-sided (see red marks on the left map)
<b>Size (w x h)</b>	Entrance banner Hall 1.2: 6.00 m x 1.10 m Entrance banner hub27: 6.50 m x 1.50m
<b>Hire Charge</b>	Entrance banner Hall 1.2: 1,680.00 EUR Entrance banner hub27: 2,480.00 EUR
<b>Production/ Installation</b>	Entrance banner Hall 1.2: 920.00 EUR Entrance banner hub27: 735.00 EUR
<b>Status</b>	<b>Availability upon request.</b>

# HALL SPECIFIC ADVERTISING

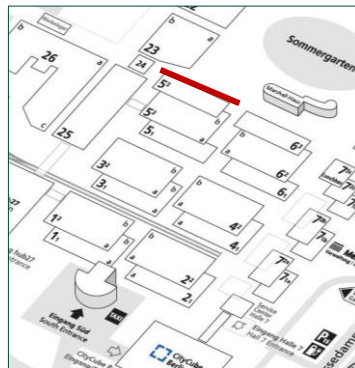


# SPECIFIC HALL AREAS – OUTDOORS



## Up to 4 Entrance Banners to the Middle Foyers of Halls 1.2 to 6.2

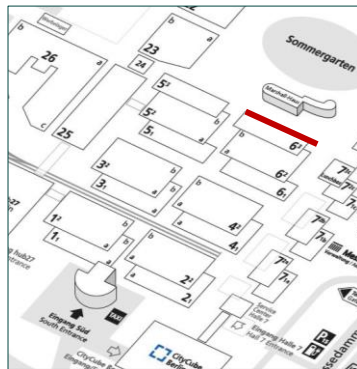
- Location** directly above the entrance doors to the middle foyers of Halls 1.2/ 2.2, 3.2/ 4.2 and 5.2/ 6.2
- Size (w x h)** 11.50 m x 2.20 m per banner (4 banners in total)
- Hire Charge** 4,600.00 EUR per banner
- Production/ Installation** 2,340.00 EUR per banner
- Status** **Availability upon request.**



## Mega Banners on the Facades of Hall 5.2

- Location** at the facade of Hall 5.2 Facing Summer Garden and Hall 25
- Size (w x h)** e.g. 11.50 m x 8.50 m per banner  
other formats are possible.
- Hire Charge** e.g. 6,550.00 EUR per banner
- Production/ Installation** e.g. 7,305.00 EUR per banner
- Status** **Availability upon request.**

# SPECIFIC HALL AREAS – OUTDOORS



## Mega-Banners on the Facades of Hall 6.2

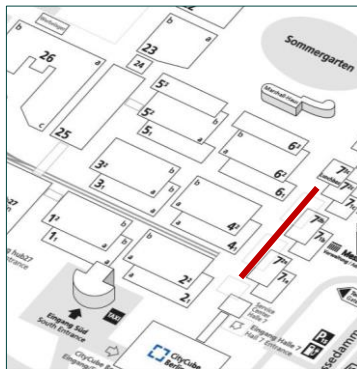
**Location** on the Facades of Hall 6.2 facing Summer Garden and Hall 7.2

**Size (w x h)**  
 (1) e.g. 29.50 m x 8.50 m (see left photo)  
 (2) e.g. 11.50 m x 8.50 m  
 other formats are possible.

**Hire Charge**  
 (1) e.g. 16,330.00 EUR per banner  
 (2) e.g. 6,550.00 EUR per banner

**Production/ Installation**  
 (1) e.g. 14,895.00 EUR per banner  
 (2) e.g. 7,305.00 EUR per banner

**Status** **Availability upon request.**



## Mega-Banners on the Facades of Hall 7.2

**Location** on the facades of Hall 7.2 facing Halls 2.2, 4.2 and 6.2

**Size (w x h)**  
 e.g. 11.50 m x 8.50 m per banner (see left photo)  
 Other formats are possible.

**Hire Charge** e.g. 6,550.00 EUR per banner

**Production/ Installation** e.g. 7,305.00 EUR per banner

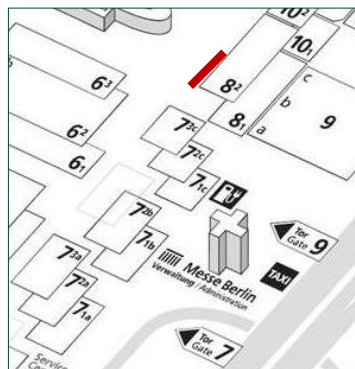
**Status** **Availability upon request.**

# SPECIFIC HALL AREAS – OUTDOORS



## 1 Entrance Banner Middle Foyer Halls 7.2c and 8.2

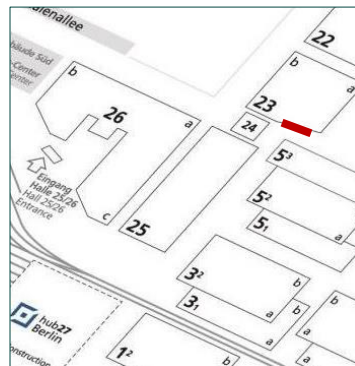
- Location** directly above the entrance doors to the middle foyer between Halls 7.2c and 8.2 Facing Summer Garden
- Size (w x h)** 11.50 m x 1.75 m (see left photo)
- Hire Charge** 3,625.00 EUR
- Production/ Installation** 1,725.00 EUR
- Status** **Availability upon request.**



## Mega-Banner on the Facade of Hall 8.2

- Location** on the facade of Hall 8.2 Facing Summer Garden
- Size (w x h)** 10.20 m x 4.65 m (see left photo)
- Hire Charge** 6,250.00 EUR
- Production/ Installation** 2,620.00 EUR
- Status** **Availability upon request.**

# SPECIFIC HALL AREAS – OUTDOORS



## 1 Mega-Banner on the Facade of Hall 23

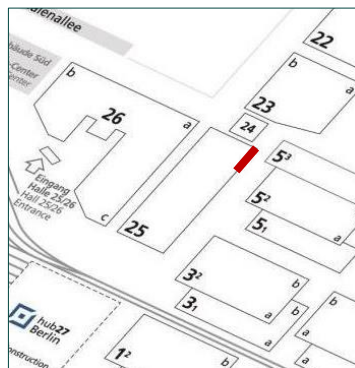
**Location** on the facade of Hall 23 facing Halls 5.2 and 25

**Size (w x h)** 26.40 m x 7.30 m

**Hire Charge** 16,840.00 EUR

**Production/ Installation** 7,695.00 EUR

**Status** **Availability upon request.**



## 1 Mega-Banner on the Facade of Hall 25

**Location** on the facade of Hall 25 facing Hall 5.2 and Summer Garden

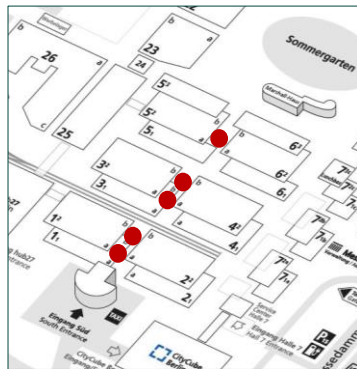
**Size (w x h)** 11.30 m x 11.30 m

**Hire Charge** 9,990.00 EUR

**Production/ Installation** 5,180.00 EUR

**Status** **Availability upon request.**

# SPECIFIC HALL AREAS – INDOORS



## OPTION A: Hanging Banners, each 2-sided

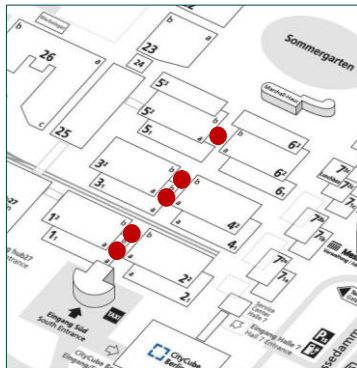
**Location** in the middle foyers of Halls 1.2, 2.2, 3.2, 4.2 (in each case a and b) as well as 5.2a and 6.2a directly above the escalators and staircases

**Size (w x h)** 9.00 m x 3.00 m per side (print on front and back side)

**Hire Charge** 11,200.00 EUR for 1 double-sided banner

**Production/ Installation** 2,565.00 EUR for 1 double-sided banner

**Status** Availability upon request.



## OPTION B: Hanging Banners, each 2-sided

**Location** in the middle foyers of Halls 1.2, 2.2, 3.2, 4.2 (in each case a and b) as well as 5.2a and 6.2a directly above the escalators and staircases

**Size (w x h)** 2.00 m x 3.00 m per double-sided banner (print on front and back side)

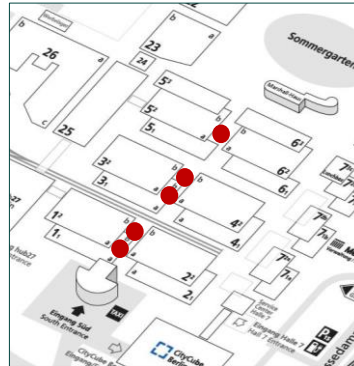
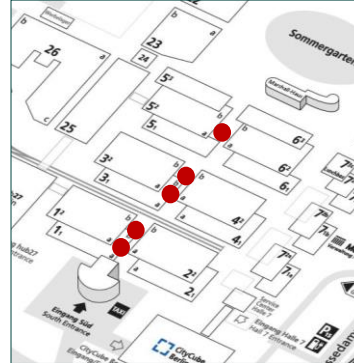
**Hire Charge** 2,540.00 EUR per double-sided banner

**Production/ Installation** 495.00 EUR per double-sided banner

**Status** Availability upon request.



# SPECIFIC HALL AREAS – INDOORS



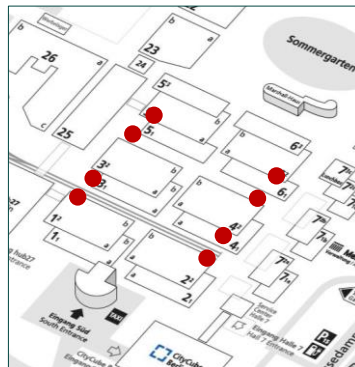
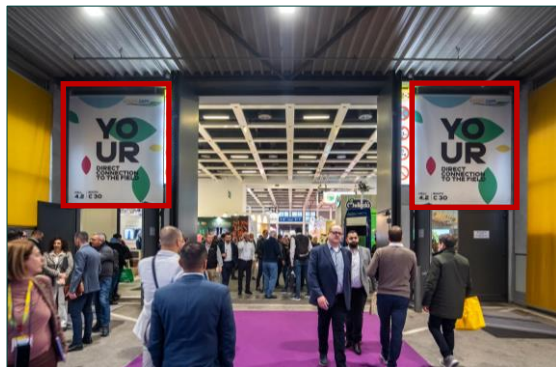
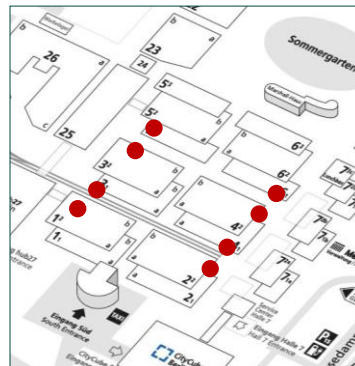
## Option A: Entrance Banners in the Middle Foyers of Halls 1.2 to 6.2

- Location** in the middle foyers at entrances and passages of Halls 1.2, 2.2, 3.2, 4.2 (in each case a and b) as well as 5.2a and 6.2a
- Size (w x h)** 2.00 m x 2.00 m per banner
- Hire Charge** 890.00 EUR per banner
- Production/ Installation** 335.00 EUR per banner
- Status** **Availability upon request.**

## Option B: Entrance Brandings in the Middle Foyers of Halls 1.2 to 6.2

- Location** in the middle foyers above and next to the entrances of Halls 1.2, 2.2, 3.2, 4.2 (in each case a and b) as well as 5.2a and 6.2a
- Size (w x h)** 1 horizontal banner with 23.40 m x 2.52 m and 2 lateral banners on the left and right: 2.50 m x 2.52 m for each side
- Hire Charge** 11,820.00 EUR per branding
- Production/ Installation** 7,870.00 EUR per branding
- Status** **Availability upon request.**

# SPECIFIC HALL AREAS – INDOORS



## Entrance Banners in the lateral Passageways of Halls 1.2 to 6.2

**Location** at the outer sides of the entrances to Halls 1.2, 2.2, 3.2, 4.2, 5.2 and 6.2 coming from the lateral passageways (see red marks on the left photo)

**Size (w x h)** 2.92 m x 5.00 m per banner (4 banners per entrance)

**Hire Charge** 5,510.00 EUR for 4 banners, i.e. per entrance

**Production/ Installation** 4,770.00 EUR for 4 banners, i.e. per entrance

**Status** **Availability upon request.**

## Entrance Banners in the lateral Passageways of Halls 1.2 to 6.2

**Location** on the left and right side next to the entrances to Halls 1.2, 2.2, 3.2, 4.2, 5.2 and 6.2 coming from the lateral passageways (see red marks in the left photo)

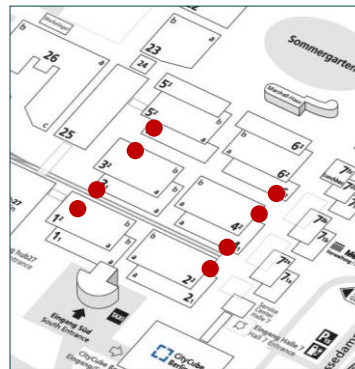
**Size (w x h)** approx. 2.50 m x 2.80 m per banner (2 banners per entrance)

**Hire Charge** 1,920.00 EUR for 2 banners, i.e. per entrance

**Production/ Installation** 1,315.00 EUR for 2 banners, i.e. per entrance

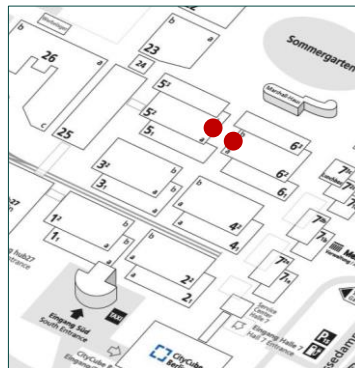
**Status** **Availability upon request.**

# SPECIFIC HALL AREAS – INDOORS



## Entrance Banners in the lateral Passageways of Halls 1.2 to 6.2

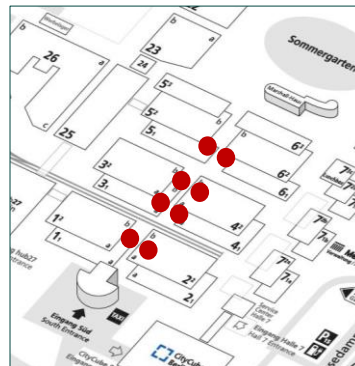
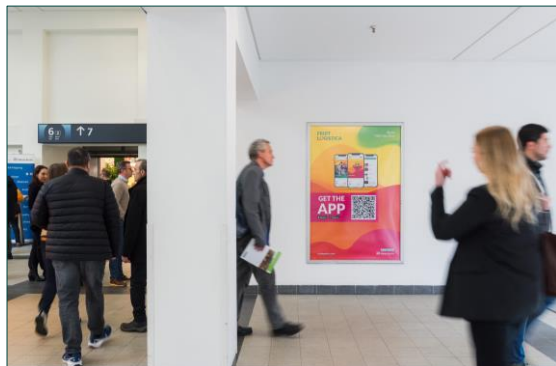
- Location** in front of the entrances to Halls 1.2, 2.2, 3.2, 4.2, 5.2 and 6.2 coming from the lateral passageways (see red marks on the left photo)
- Size (w x h)** 10.00 m x 1.00 m per double-sided banner
- Hire Charge** 2,825.00 EUR per double-sided banner
- Production/ Installation** 2,085.00 EUR per double-sided banner
- Status** **Availability upon request.**



## 2 Wall Brandings in the Middle Foyer of Halls 5.2b/ 6.2b

- Location** in the middle foyer between the entrance doors of Hall 5.2b in the middle foyer between the entrance doors of Hall 6.2b
- Size (w x h)** 14.60 m x 2.50 m per branding
- Hire Charge** 5,675.00 EUR per branding
- Production/ Installation** 3,480.00 EUR per branding
- Status** **Availability upon request.**

# SPECIFIC HALL AREAS – INDOORS



## Poster Showcases between Halls 1.2 to 6.2, unlighted

### Location

- Up to 8 showcases in the middle Foyers of Halls 1.2 to 6.2:
- exit area middle Foyer Halls 1.2/ 2.2: 2 showcases
  - entrance area middle Foyer Halls 3.2/ 4.2: 2 showcases
  - exit area middle Foyer Halls 3.2/ 4.2: 2 showcases
  - entrance area middle Foyer Halls 5.2/ 6.2: 2 showcases

### Size (w x h)

1.18 m x 1.75 m per poster

### Hire Charge

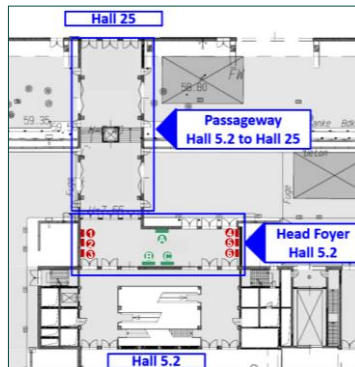
248.00 EUR per poster

### Production/ Installation

150.00 EUR per poster

### Status

Availability upon request.



## Lateral Banners in the Head Foyer of Hall 5.2

### Location

- up to 6 banners in the head foyer of Hall 5.2 as connection to Hall 25: 3 banners at the north side and 3 banners at the south side (see 1 to 6 in red on the detailed map left)

### Size (w x h)

1.30 m x 2.30 m per banner (6 banners in total)

### Hire Charge

2,830.00 EUR for all 6 banners

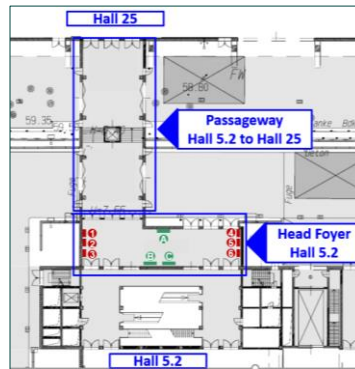
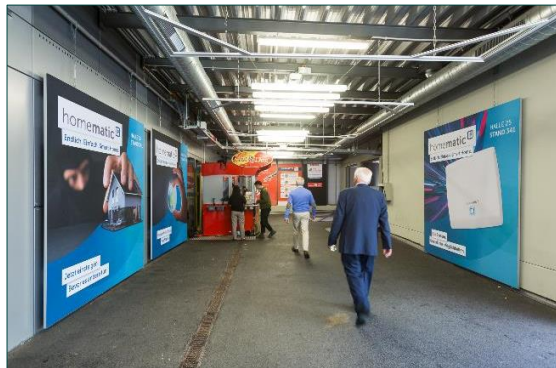
### Production/ Installation

720.00 EUR for all 6 banners

### Status

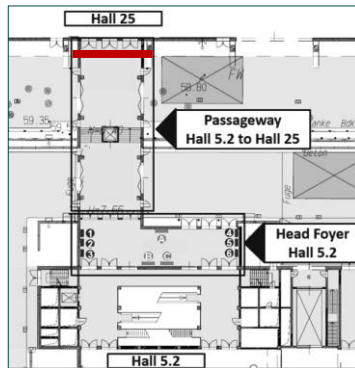
Availability upon request.

# SPECIFIC HALL AREAS – INDOORS



## Lateral Banners in the Head Foyer of Hall 5.2

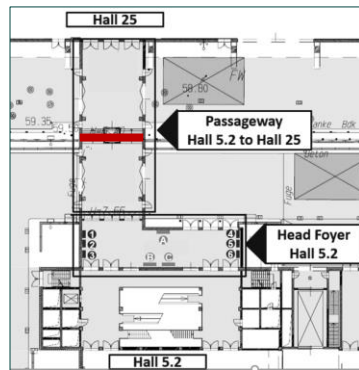
- Location** up to 3 banners in the head foyer of Hall 5.2 as connection to Hall 25: 2 banners at the east side and 1 banner at the west side (see A, B and C on the detailed map left)
- Size (w x h)** 2.50 m x 2.50 m per banner
- Hire Charge** 2,825.00 EUR for all 3 banners
- Production/ Installation** 560.00 EUR for all 3 banners
- Status** **Availability upon request.**



## Entrance Banner leading to Hall 5.2a

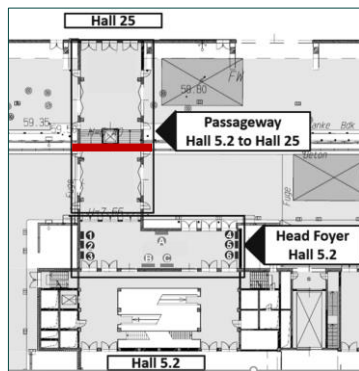
- Location** at the end of the passageway leading to Hall 5.2a coming from Hall 25 above the entrance to the head foyer of Hall 5.2a (see red mark on the left map)
- Size (w x h)** 7.80 m x 3.00 m
- Hire Charge** 3,685.00 EUR
- Production/ Installation** 1,265.00 EUR
- Status** **Availability upon request.**

# SPECIFIC HALL AREAS – INDOORS



## Passageway Banner leading to Hall 5.2a

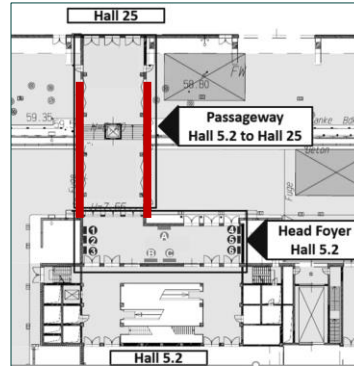
<b>Location</b>	in the middle of the passageway leading to Hall 5.2a coming from Hall 25
<b>Size (w x h)</b>	7.80 m x 2.50 m
<b>Hire Charge</b>	2,725.00 EUR
<b>Production/ Installation</b>	1,180.00 EUR
<b>Status</b>	<b>Availability upon request.</b>



## Passageway Banner leading to Hall 25

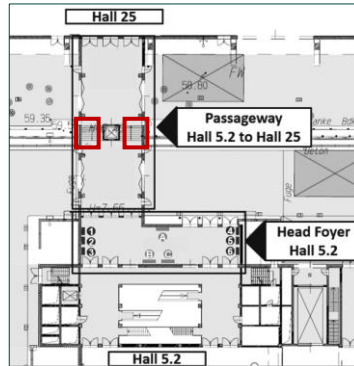
<b>Location</b>	in the middle of the passageway leading to Hall 25 coming from Hall 5.2a
<b>Size (w x h)</b>	7.80 m x 1.30 m
<b>Hire Charge</b>	1,700.00 EUR
<b>Production/ Installation</b>	925.00 EUR
<b>Status</b>	<b>Availability upon request.</b>

# SPECIFIC HALL AREAS – INDOORS



## Lateral Banners in the Passageway between Halls 5.2a and 25

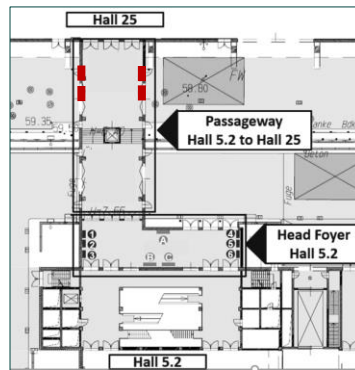
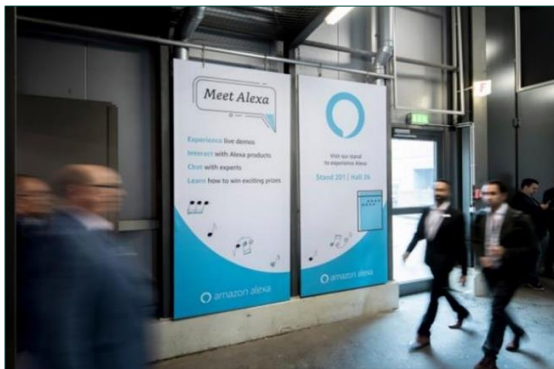
- Location** up to 8 banners in the passageway between Halls 5.2a and 25: north side and south side (see red marks on the left map)
- Size (w x h)** 4 banners: 1.30 m x 3.00 m each (2 on the right and 2 on the left)  
4 banners: 1.30 m x 1.70 m each (2 on the right and 2 on the left)
- Hire Charge** 3,720.00 EUR for all 8 banners
- Production/ Installation** 955.00 EUR for all 8 banners
- Status** **Availability upon request**



## Step Graphics at the Stairs in the Passageway leading to Hall 25

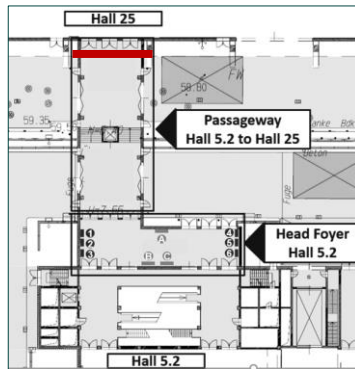
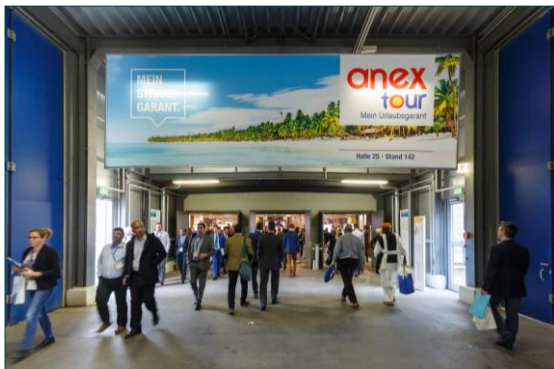
- Location** 2 stairs in the passageway leading to Hall 25 (see red marks on the left map) every step will be equipped with an adhesive foil
- Size (w x h)** 2 stairs with 8 step graphics each:  
lowest steps: 3.04 m x 0.10 m each  
step graphics no. 2 to 8: 3.04 m x 0.14 m each
- Hire Charge** 2,100.00 EUR for both stairs (i.e. 16 steps in total)
- Production/ Installation** 1,495.00 EUR for both stairs (i.e. 16 steps in total)
- Status** **Availability upon request**

# SPECIFIC HALL AREAS – INDOORS



## 4 Lateral Banners at the Entrance to Hall 25

- Location** up to 4 banners at the entrance to Hall 25 coming from Hall 5.2a: 2 banners at the north side and 2 banners at the south side (see red marks on the left map)
- Size (w x h)** 1.30 m x 2.60 m per banner
- Hire Charge** 2,270.00 EUR for all 4 banners
- Production/ Installation** 505.00 EUR for all 4 banners
- Status** **Availability upon request.**

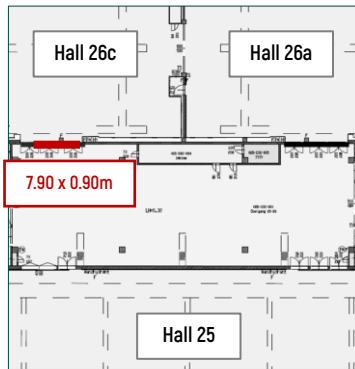
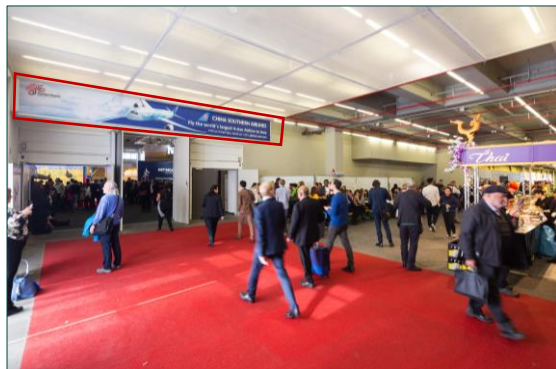
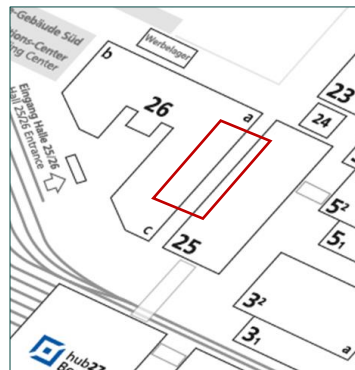


## Entrance Banners to Hall 25

- Location** directly above the entrance doors to Hall 25 coming from Hall 5.2a
- Size (w x h)** 7.80 m x 2.50 m
- Hire Charge** 3,075.00 EUR
- Production/ Installation** 1,075.00 EUR
- Status** **Availability upon request.**



# SPECIFIC HALL AREAS – INDOORS



## Passageway and Catering Area Branding between Halls 25 and 26

**Location** various banners in the passageway connecting Halls 25 and 26 as well as in the catering area in this passageway (see red mark on the left map)

**Size (w x h)** 4 banners à 2.60 m x 4.45 m,  
2 banners à 4.00 m x 3.50 m and  
4 banners à 3.00 m x 2.00 m

**Hire Charge** 15,315.00 EUR for all 10 banners

**Production/ Installation** 5,745.00 EUR for all 10 banners

**Status** Availability upon request.

## Entrance Banner to Hall 26c

**Location** directly above the entrance doors to Hall 26c coming from Hall 25

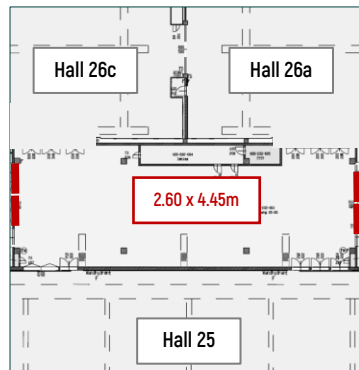
**Size (w x h)** 7.90 m x 0.90 m

**Hire Charge** 1,120.00 EUR

**Production/ Installation** 710.00 EUR

**Status** Availability upon request.

# SPECIFIC HALL AREAS – INDOORS



## Passageway Banners between Halls 25 and 26

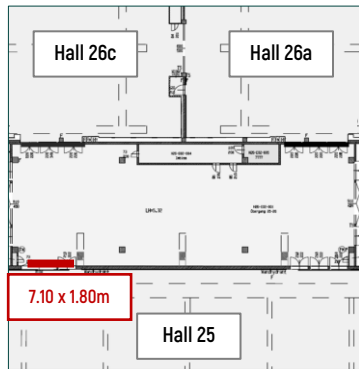
**Location** up to 4 banners at the sides of both passageways connecting Halls 25 and 26: 2 banners in the left passageway and 2 banners in the right passageway

**Size (w x h)** 2.60 m x 4.45 m per banner

**Hire Charge** 1,815.00 EUR per banner

**Production/ Installation** 675.00 EUR per banner

**Status** **Availability upon request.**



## Banner above the right Entrance to Hall 25

**Location** directly above the entrance doors to Hall 25 coming from Hall 26c (see red mark on the left picture)

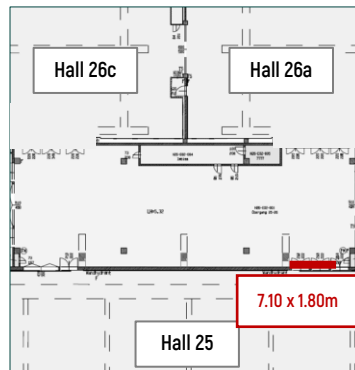
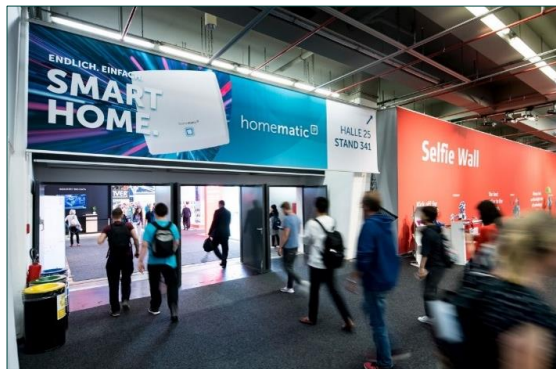
**Size (w x h)** 7.10 m x 1.80 m

**Hire Charge** 1,900.00 EUR

**Production/ Installation** 785.00 EUR

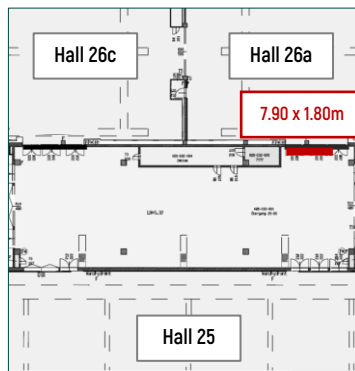
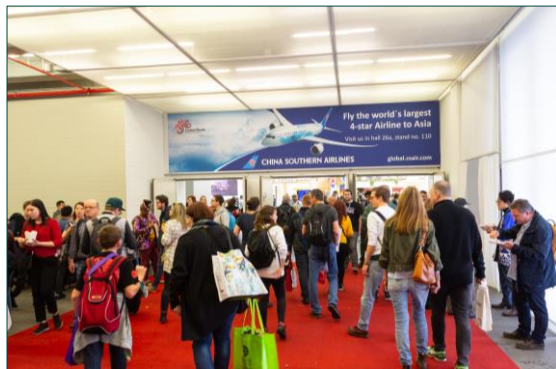
**Status** **Availability upon request.**

# SPECIFIC HALL AREAS – INDOORS



## Banner above the left Entrance to Hall 25

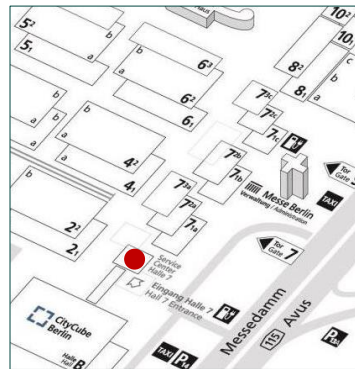
<b>Location</b>	directly above the entrance doors to Hall 25 coming from Hall 26a
<b>Size (w x h)</b>	7.10 m x 1.80 m
<b>Hire Charge</b>	1,900.00 EUR
<b>Production/ Installation</b>	785.00 EUR
<b>Status</b>	<b>Availability upon request.</b>



## Entrance Banner to Hall 26a

<b>Location</b>	directly above the entrance doors to Hall 26a coming from Hall 25
<b>Size (w x h)</b>	7.90 m x 1.80 m
<b>Hire Charge</b>	2,230.00 EUR
<b>Production/ Installation</b>	855.00 EUR
<b>Status</b>	<b>Availability upon request.</b>

# SPECIFIC HALL AREAS – INDOORS



## 1 Banner in Hall 7, 1-sided

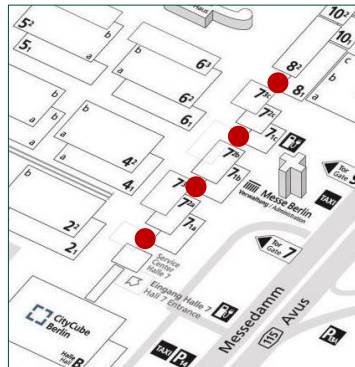
**Location** suspended banner directly in the entrance area of Hall 7 (see red mark on the left photo)

**Size (w x h)** 3.50 m x 2.50 m (print only on the front side)

**Hire Charge** 1,870.00 EUR

**Production/ Installation** 590.00 EUR

**Status** **Availability upon request.**



## Poster Showcases between Halls 7.2 and 8, unlighted

**Location** up to 15 showcases in the entrance areas and passages of Hall 7.2 and Hall 8

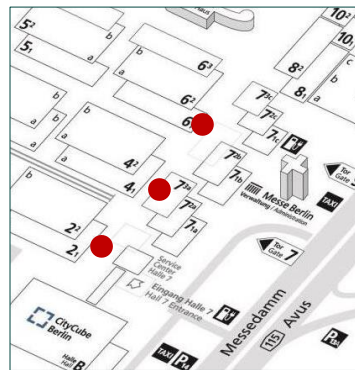
**Size (w x h)** 1.18 m x 1.75 m per poster

**Hire Charge** 250.00 EUR per poster

**Production/ Installation** 150.00 EUR per poster

**Status** **Availability upon request.**

# SPECIFIC HALL AREAS – INDOORS



## Passageway Banners between Halls 2.2, 4.2, 6.2 and 7.2

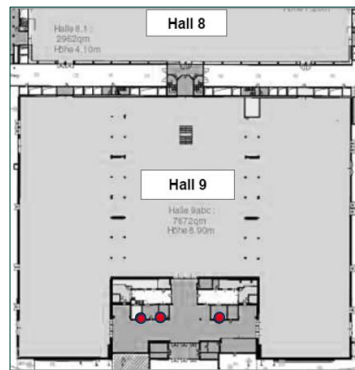
<b>Location</b>	passageways between Halls 2.2/ 7.2a, 4.2/ 7.2b and 6.2/ 7.2c
<b>Size (w x h)</b>	5.50 m x 1.50 m per banner (2 one-sided and 2 double-sided banners per passageway)
<b>Hire Charge</b>	10,130.00 EUR for 4 banners, i.e. per passageway
<b>Production/ Installation</b>	3,312.00 EUR for 4 banners, i.e. per passageway
<b>Status</b>	<b>Availability upon request.</b>



## 3 Banner Frames Entrance Foyer Hall 9

<b>Location</b>	in the Entrance Foyer of Hall 9 coming from Messedamm (see positions A to C)
<b>Size (w x h)</b>	3 double-sided banners (print on front and back side): 6.00 m x 1.35 m per banner
<b>Hire Charge</b>	4,135.00 EUR per doubled-sided banner
<b>Production/ Installation</b>	1,680.00 EUR per doubled-sided banner
<b>Status</b>	<b>Availability upon request.</b>

# SPECIFIC HALL AREAS – INDOORS



## 3 Poster Showcases in Hall 9, backlit

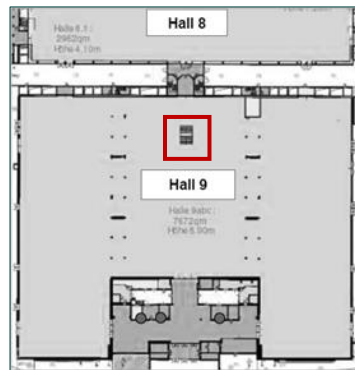
<b>Location</b>	3 posters in the entrance area of Hall 9
<b>Size (w x h)</b>	1.18 m x 1.75 m per poster
<b>Hire Charge</b>	480.00 EUR per poster
<b>Production/ Installation</b>	150.00 EUR per poster
<b>Status</b>	<b>Availability upon request.</b>



## Banner Frames between Halls 8 and 9

<b>Location</b>	up to 9 banner frames in the entrance areas and passages of Hall 8 and Hall 9
<b>Size (w x h)</b>	1.02 m x 2.02 m per banner frame
<b>Hire Charge</b>	560.00 EUR per banner
<b>Production/ Installation</b>	85.00 EUR per banner frame
<b>Status</b>	<b>Availability upon request.</b>

# SPECIFIC HALL AREAS – INDOORS



## Option A: Balustrade Branding in Hall 9, 3-sided

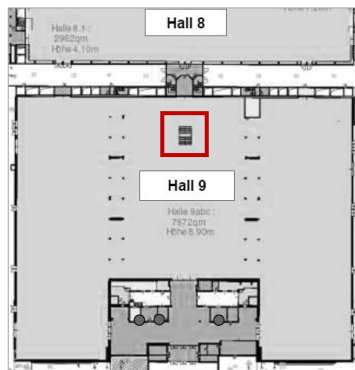
**Location** in Hall 9 coming from Hall 8: branding of the balustrade around the emergency exit (Facing outwards - 3 sides in total)

**Size (w x h)**  
2 spaces à approx. 6.00 m x 1.12 m  
1 space approx. 4.16 m x 1.12 m

**Hire Charge** 4,305.00 EUR for the complete branding (i.e. for all 3 spaces)

**Production/ Installation** 4,010.00 EUR for the complete branding (i.e. for all 3 spaces)

**Status** **Availability upon request.**



## Option B: Balustrade Branding in Hall 9, 6-sided

**Location** in Hall 9 coming from Hall 8: branding of the balustrade around the emergency exit (Facing inwards and outwards – 6 sides in total)

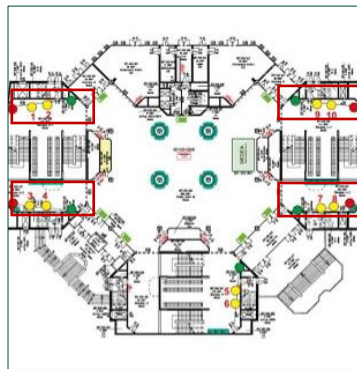
**Size (w x h)**  
2 spaces à 6.00 m x 1.12 m  
2 spaces à 5.90 m x 1.12 m  
1 space à 4.16 m x 1.12 m  
1 space à 3.96 m x 1.12 m

**Hire Charge** 6,890.00 EUR for the complete branding, i.e. for all 6 spaces

**Production/ Installation** 6,355.00 EUR for the complete branding, i.e. for all 6 spaces

**Status** **Availability upon request.**

# SPECIFIC HALL AREAS – INDOORS



## Poster Frames in the Passageway Großer Stern

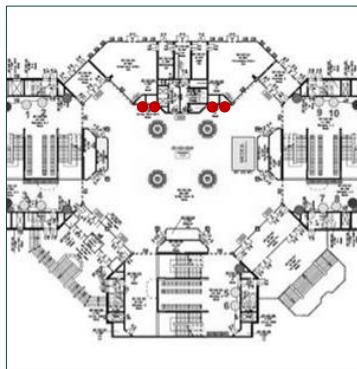
**Location** up to 10 poster frames in the passageway Großer Stern on Level 2 between Halls 10.2, 11.2 and 12 (see yellow points on the left map)

**Size (w x h)** 0.99 m x 2.31 m per poster

**Hire Charge** 560.00 EUR per poster

**Production/ Installation** 170.00 EUR per poster

**Status** **Availability upon request.**



## Digital Displays in the Passageway Großer Stern

**Location** up to 4 digital displays in the passageway Großer Stern on Level 2 with 4 screens in total, whereof 2 screens are installed side by side

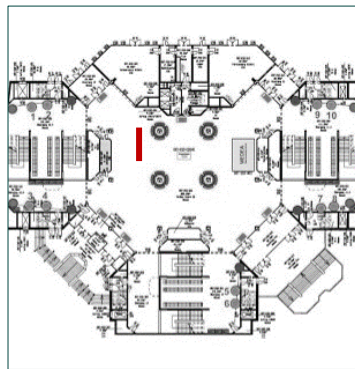
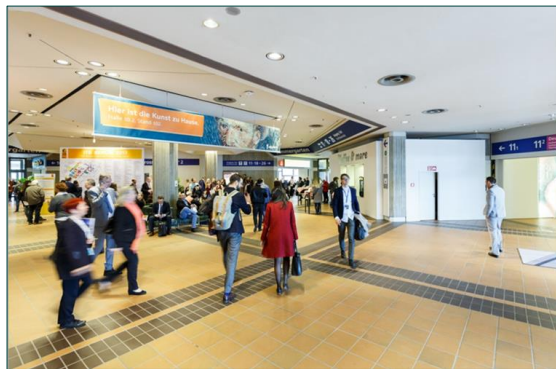
**Technical Specs** 75" displays picture format (w x h): 2160 pixel x 3840 pixel  
or 1080 pixel x 1920 pixel  
file format: PNG  
video format (w x h): 2160 pixel x 3840 pixel  
or 1080 pixel x 1920 pixel

**Hire Charge** 1,690.00 EUR per screen for a 30 sec spot in loop with organizer content

**Status** **Availability upon request.**



# SPECIFIC HALL AREAS – INDOORS



## Suspended Banners in the Passageway Großer Stern, 2-sided

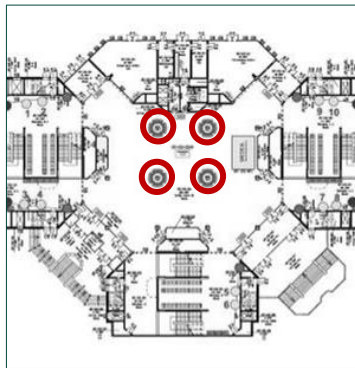
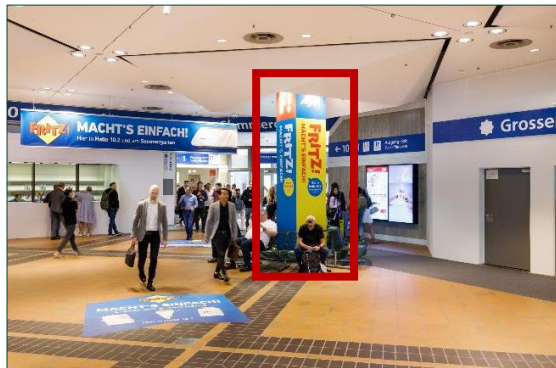
**Location** in the passageway Großer Stern on level 2 at the exit to Summer Garden (see red mark on the left map)

**Size (w x h)** 6.00 m x 0.90 m per side (2 sides per banner)

**Hire Charge** 3,190.00 EUR

**Production/ Installation** 1,090.00 EUR

**Status** **Availability upon request.**



## Pillar Brandings in the Passageway Großer Stern

**Location** Up to 4 pillar brandings in the passageway Großer Stern on Level 2 (see red marks on the left map)

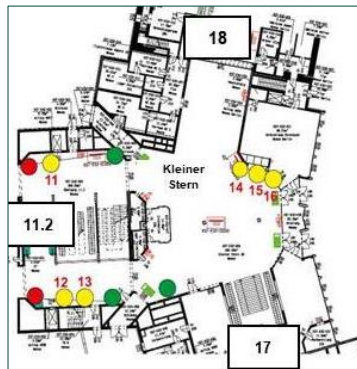
**Size (w x h)** 0.80 m x 4.08 m per side (4 sides per pillar)

**Hire Charge** 3,910.00 EUR per 4-sided pillar branding

**Production/ Installation** 1,935.00 EUR per 4-sided pillar branding

**Status** **Availability upon request.**

# SPECIFIC HALL AREAS – INDOORS

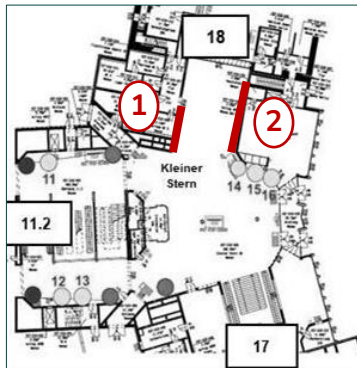


## Poster Frames in the Passageway Kleiner Stern

<b>Location</b>	up to 6 poster frames in the passageway Kleiner Stern on Level 2 between Halls 11.2, 17 and 18 (see yellow points on the left map)
<b>Size (w x h)</b>	0.99 m x 2.31 m per poster
<b>Hire Charge</b>	560.00 EUR per poster
<b>Production/ Installation</b>	170.00 EUR per poster

### Status

Availability upon request.



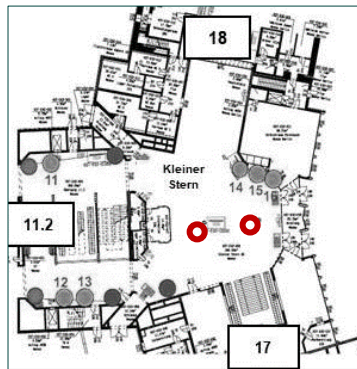
## Wall Brandings in the Passageway Kleiner Stern

<b>Location</b>	in the passageway Kleiner Stern on level 2 at the access to Hall 18
<b>Size (w x h)</b>	position 1: 6.00 m x 2.20 m position 2: 8.10 m x 2.20 m
<b>Hire Charge</b>	position 1: 3,815.00 EUR position 2: 5,155.00 EUR
<b>Production/ Installation</b>	position 1: 790.00 EUR position 2: 1,065.00 EUR

### Status

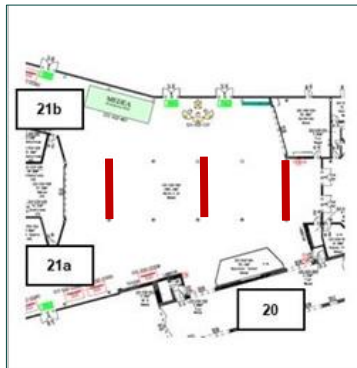
Availability upon request.

# SPECIFIC HALL AREAS – INDOORS



## 2 Pillar Brandings in the Passageway "Kleiner Stern", each 4-sided

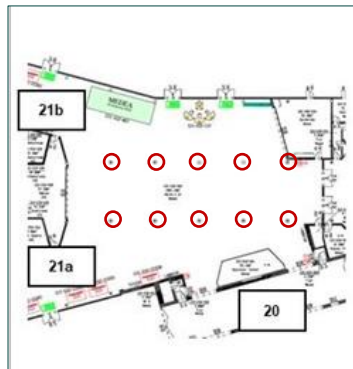
<b>Location</b>	in the passageway "Kleiner Stern" on Level 2 in the passageway "Kleiner Stern" on level 2 between Halls 11.2, 17 and 18
<b>Size (w x h)</b>	0.65 m x 3.30 m per side (4 sides per pillar)
<b>Hire Charge</b>	3,420.00 EUR for both 4-sided pillar brandings
<b>Production/ Installation</b>	3,220.00 EUR for both 4-sided pillar brandings
<b>Status</b>	<b>Availability upon request.</b>



## Suspended Banners between Halls 20 and 21, each 2-sided

<b>Location</b>	in the entrance area to Hall 21 (see red marks on the map) The final number of usable banners will depend on the allocation of the passageway.
<b>Size (w x h)</b>	3.00 m x 2.00 m per side (print on front and back side)
<b>Hire Charge</b>	2,625.00 EUR per double-sided banner
<b>Production/ Installation</b>	395.00 EUR per double-sided banner
<b>Status</b>	<b>Availability upon request.</b>

# SPECIFIC HALL AREAS – INDOORS



## 10 Pillar Brandings, each 4-sided

- Location** in the entrance areas to Halls 20 and 21 (see red marks on the map)
- Size (w x h)** approx. 0.58 m x 2.50 m per side (4 sides per pillar)
- Hire Charge** 1,170.00 EUR per 4-sided pillar branding
- Production/ Installation** 1,140.00 EUR per 4-sided pillar branding
- Status** **Availability upon request.**



## Window Brandings between Hall 20 and 21

- Location** in the entrance area to Hall 21b coming from the Entrance Hall 21 and From Hall 20
- Size (w x h)** e.g. 12 window brandings with 1.13 m x 0.78 m each (see exemplary red mark on the left photo)
- Hire Charge** e.g. 2,310.00 EUR for 12 window brandings
- Production/ Installation** e.g. 550.00 EUR for 12 window brandings
- Status** **Some window brandings are currently available.**

# SPECIFIC HALL AREAS – INDOORS



## 2 Direction Banners, each 2-sided

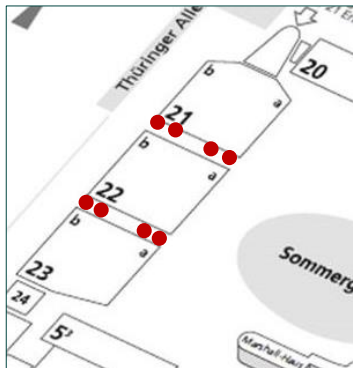
**Location** in the entrance areas to Hall 21 coming from Halls 20/ 21 (see red marks on the map)

**Size (w x h)** e.g. 5.50 m x 0.50 m per side  
(2 sides per banner – other formats are possible)

**Hire Charge** e.g. 1,846.00 EUR per 2-sided banner

**Production/ Installation** e.g. 445.00 EUR per 2-sided banner

**Status** **Availability upon request.**



## Framed Entrance Banners Halls 21, 22 & 23

**Location** directly above various entrance doors to Hall 21, 22 and 23

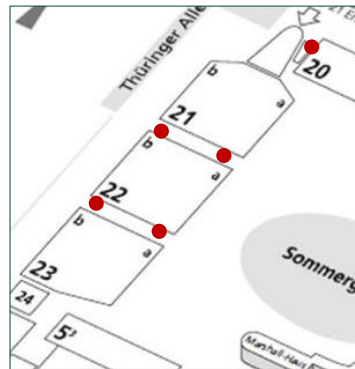
**Size (w x h)** e.g. 4.75 m x 1.50 m per framed banner

**Hire Charge** 1,745.00 EUR per framed banner

**Production/ Installation** 1,410.00 EUR per framed banner

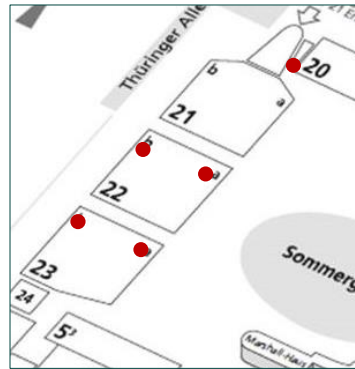
**Status** **Availability upon request.**

# SPECIFIC HALL AREAS – INDOORS



## Option A: Wall Brandings between Halls 20, 21, 22 and 23

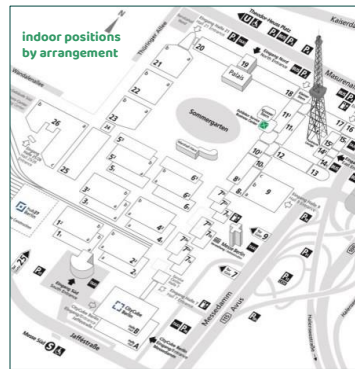
- Location** Wall brandings within the catering areas and next to the passageways between Halls 20 to 23 (see red marked areas on the left map)
- Size (w x h)** e.g. up to 9.50 m x 1.17 m per branding area
- Hire Charge** 2,270.00 EUR per branding
- Production/ Installation** 1,066.00 EUR per branding
- Status** **Availability upon request.**



## Option B: Framed Entrance Banners Halls 21, 22 & 23

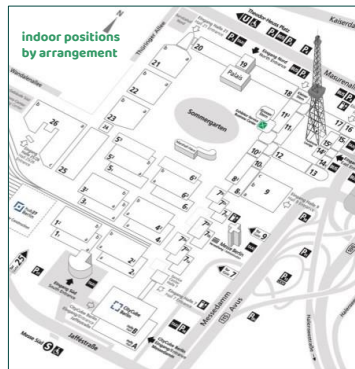
- Location** next to the catering areas and passageways between Halls 20 and 23 (see red marks on the map)
- Size (w x h)** DIN A0 format, i.e. 0.841 m x 1.189 m per poster (up to 10 or 16 posters per area)
- Hire Charge** 245.00 EUR per poster
- Production/ Installation** 95.00 EUR per poster
- Status** **Availability upon request.**

# SPECIFIC HALL AREAS – INDOORS



## Option A: Hall Brandings – insertion

- Location** positions by arrangement  
(see exemplary yellow mark on the left photo)
- Size (w x h)** e.g. 1.00 m x 0.50 m per sign/ per position
- Hire Charge** e.g. 150.00 EUR per sign of the exemplary size
- Production/ Installation** e.g. 120.00 EUR per sign of the exemplary size
- Status** **Availability upon request.**



## Option B: Hall Brandings – covering

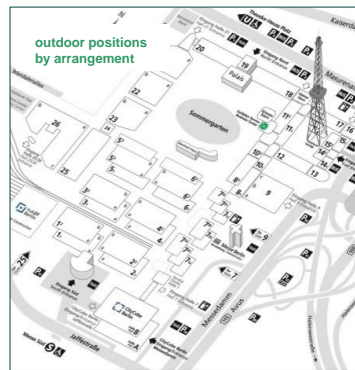
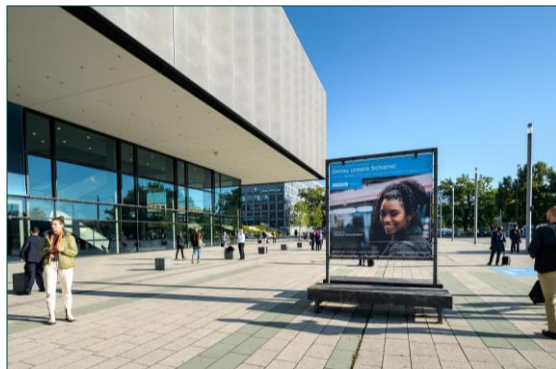
- Location** positions by arrangement  
(see exemplary yellow mark on the left photo)
- Size (w x h)** e.g. 4,50 x 0,50 m per sign/ per position  
(full width – see left photo)
- Hire Charge** e.g. 675.00 EUR per sign (full width)
- Production/ Installation** e.g. 200.00 EUR per (full width)
- Status** **Availability upon request.**

# ADVERTISING SPECIALS



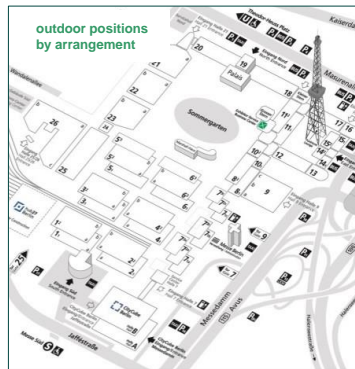


# SPECIALS – OUTDOORS



## Bench Displays, 2-sided

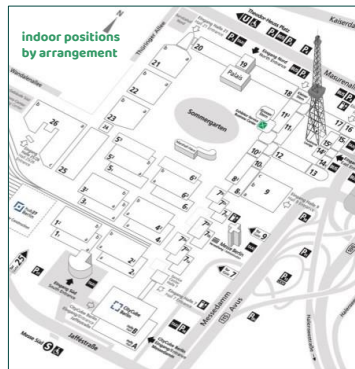
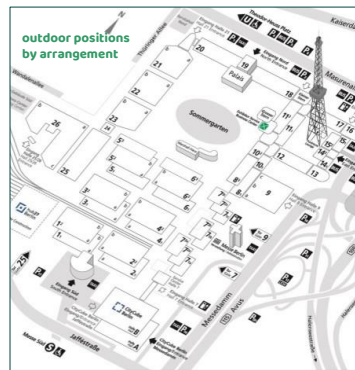
- Location** positions by arrangement: e.g. at Entrance South
- Size (w x h)** 2.05 m x 2.05 m per side (2 sides per display)
- Hire Charge** 2,135.00 EUR per bench display
- Production/ Installation** 405.00 EUR per 2-sided display
- Status** **Availability upon request.**



## Mobile Flagpoles

- Location** mobile flagpoles outdoors: e.g. around Summer Garden, on roads, at passageways etc.
- Size (w x h)** 1.50 m x 4.00 m per flag approx. 6.50 m height per pole
- Hire Charge** 622.00 EUR per flag and pole
- Production/ Installation** on demand (depending on layout, quantity and finishing)
- Status** **Availability upon request.**

# SPECIALS – OUTDOORS & INDOORS



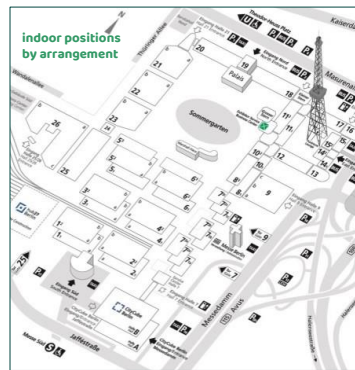
## Floor Graphics (Outdoors)

- Location** positions by arrangement: e.g. at Entrance South
- Size (w x h)** e.g. 2.40 m x 2.40 m per floor graphic  
Special formats are possible. (see photo on the left)
- Hire Charge** e.g. 1,075.00 EUR per Floor graphic
- Production/ Installation** e.g. 670.00 EUR per floor graphic
- Status** **Availability upon request.**

## Floor Graphics (Indoors)

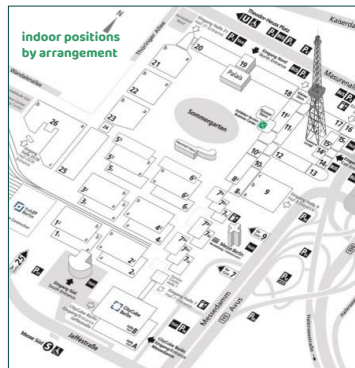
- Location** positions by arrangement: e.g. in the middle Foyers of Halls 1.2 to 6.2
- Size (w x h)** e.g. 1.00 m x 1.00 m per graphic  
e.g. 2.00 m x 2.00 m per graphic  
Special formats and carpet brandings on demand.
- Hire Charge** e.g. 194.00 EUR per floor graphic  
e.g. 500.00 EUR per floor graphic
- Production/ Installation** e.g. 105.00 EUR per floor graphic  
e.g. 335.00 EUR per floor graphic
- Status** **Availability upon request.**

# SPECIALS – INDOORS



## Pillar Brandings in several Middle Foyers

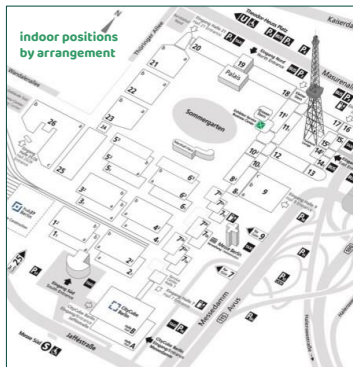
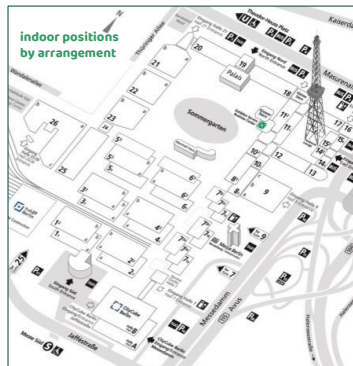
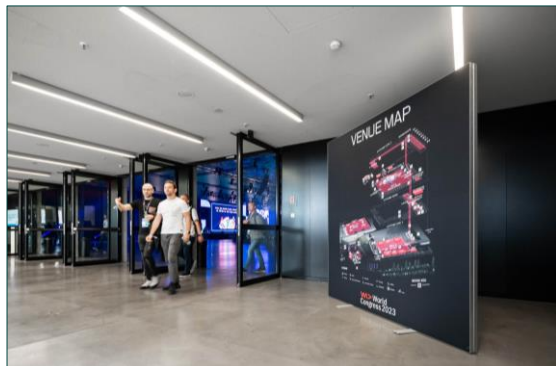
- Location** in middle foyers and catering areas of Halls 1.1 to 6.1 and Halls 1.2 to 6.2 as well as in the entrance areas
- Size (w x h)** approx. 0.60 m x 2.50 m per side (4 sides per pillar)
- Hire Charge** 1,135.00 EUR per 4-sided pillar branding
- Production/ Installation** 1,140.00 EUR per 4-sided pillar branding
- Status** **Availability upon request.**



## Banner Frames, 1- or 2-sided

- Location** indoor positions by arrangement: e.g. in the middle foyers as well as in the entrance areas
- Size (w x h)** e.g. 1.00 m x 2.00 m per side  
other sizes on demand
- Hire Charge** e.g. 735.00 EUR per 2-sided display  
e.g. 440.00 EUR per 1-sided display
- Production/ Installation** e.g. 365.00 EUR per 2-sided display  
e.g. 235.00 EUR per 1-sided display
- Status** **Availability upon request.**

# SPECIALS – INDOORS



## PILA Frames, 1-sided

**Location** indoor positions by arrangement: e.g. in the middle foyers as well as in the entrance areas

**Size (w x h)** (1) e.g. 2.28 m x 2.28 m per banner (see picture on the left)  
(2) e.g. 6.00 m x 2.00 m per banner

**Hire Charge** (1) e.g. 1,303.00 EUR  
(2) e.g. 3,030.00 EUR

**Production/ Installation** (1) e.g. 530.00 EUR  
(2) e.g. 695.00 EUR

**Status** **Availability upon request.**

## Advertising Banner Frames in the Middle Foyers

**Details** indoor positions by arrangement: e.g. in the middle Foyers of Halls 1.1 to 6.1 as well as in the middle foyers of Halls 1.2 to 6.2

**Size (w x h)** 2.485 m x 2.485 m per banner frame

**Hire Charge** 1,195.00 EUR per banner and frame

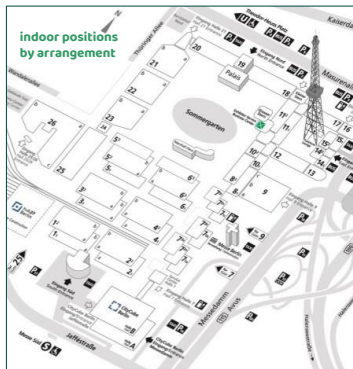
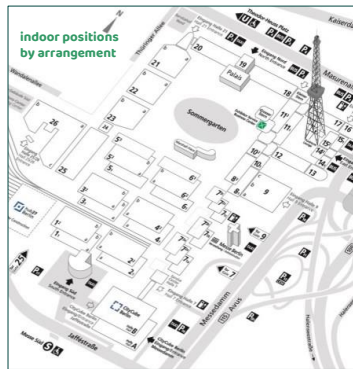
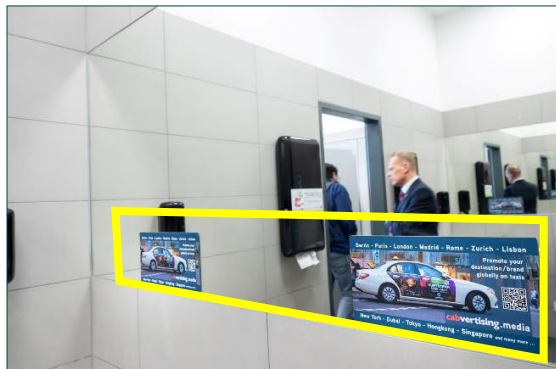
**Production/ Installation** 530.00 EUR per banner and frame

**Status** **Availability upon request.**

# SANITARY FACILITIES ADVERTISING



# SANITARY FACILITIES – INDOORS



## Mirror Brandings

**Location** high-quality stickers with your individual design on more than 400 mirrors in the lavatories

**Size (w x h)** e.g. 0.30 m x 0.15 m per sticker  
Other Formats and special shapes on demand.

**Hire Charge** e.g. 7,210.00 EUR for 250 mirrors

**Production/ Installation** e.g. 2,840.00 EUR for 250 mirrors  
for smaller quantities a handling fee of 500.00 EUR will be charged

**Status** **Availability upon request.**

## Towel Dispensers Brandings

**Location** high-quality stickers with your individual design on the towel dispensers in the lavatories (approx. 350 in total)

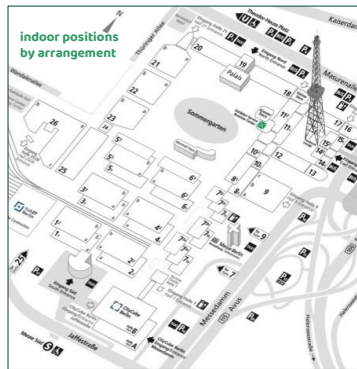
**Size (w x h)** e.g. 0.30 m x 0.15 m per sticker  
Other Formats and special shapes are possible

**Hire Charge** e.g. 7,210.00 EUR for 250 towel dispensers

**Production/ Installation** e.g. 2,840.00 EUR for 250 towel dispensers  
for smaller quantities a handling fee of 500.00 EUR will be charged

**Status** **Availability upon request.**

# SANITARY FACILITIES – INDOORS



## Door Brandings

### Location

high-quality stickers with your individual design on the doors in the lavatories as well as in the toilets (approx. 800 doors total)

### Size (w x h)

e.g. 0.30 m x 0.15 m per sticker  
Other Formats and special shapes are possible.

### Hire Charge

e.g. 7,210.00 EUR for 250 door sticker

### Production/ Installation

e.g. 2,840.00 EUR for 250 door sticker  
for smaller quantities a handling fee of 500.00 EUR will be charged

### Status

**Availability upon request.**



# Grüne Woche

The global hub for agribusiness

## GET IN TOUCH WITH OUR EXPERIENCED MARKETING TEAM...

GIVE US A CALL OR WRITE US AN E-MAIL:

PHONE: +49(0)30 3038-2525

E-MAIL: [ADVERTISING@MESSE-BERLIN.DE](mailto:ADVERTISING@MESSE-BERLIN.DE)

## LET'S BOOST YOUR VISIBILITY BEYOND YOUR BOOTH!

**Chris Leon Maroschek**  
Junior Project Manager

**Leopold Benecke**  
Project Manager

**Tuba Ipek**  
Senior Project Manager

**Lilith Strebl-Schneider**  
Marketing Director

**Gudrun Mehrlase**  
Senior Project Manager

**Kristina Bendler**  
Senior Project Manager

**Emily Frieden**  
Junior Project Manager

**Ann-Sophie von Zastrow**  
Junior Project Manager

Important note on prices:

All indicated prices plus Value Added Tax. Subject to change. Subject to confirmation.

The indicated prices apply to the period of the exhibition. Prices for production and installation are subject to fluctuations due to the dynamic price development of some materials used and can thus only be offered without obligation. Agency commissions will not be accorded. Prices do not include graphic design/layout.

 **MESSE  
BERLIN**